

Caravel

Name: Caravel
Classification: Sans Serif
Designer: Jonny Pinhorn
Designed in: 2015
Styles: 5

www.indiantypefoundry.com

Caravel is a Latin grotesque sans typeface family.

An original contribution to a well-known style, Caravel distinguishes itself from similar typefaces by adding in extra character where it can; several lowercase letters and non-alphabetic glyphs are livelier than average. The typeface's design is both space-saving and friendly – everything an international audience requires, including many accents, multiple currency symbols, optional old-style figures, and five separate weights.

A space-saving and friendly grotesque sans

— Caravel

Caravel is a Latin grotesque sans typeface family. An original contribution to a well-known style, Caravel distinguishes itself from similar typefaces by adding in extra character where it can; several lowercase letters and non-alphabetic glyphs are livelier than average. The typeface's design is both space-saving and friendly – everything an international audience requires, including many accents, multiple currency symbols, optional old-style figures, and five separate weights.

LIGHT

Tribesmanship

A playground, playpark, or play area is a place with a specific design allow

REGULAR

Kainolophobic

The sand should be mortar or brick sand (washed & filtered if possible)

MEDIUM

Calligraphists

This allows a user of concrete to be confident that the structure will

SEMIBOLD

SUGARFAIRY

Organic materials (leaves, twigs) should be removed from sand...

BOLD

Gunpowders

Besides volcanic ash for making regular Roman concrete, brick

THE FAMILY CONSISTS OF
FIVE USEFUL WEIGHTS RANGING
FROM LIGHT TO BOLD

Caravel Light

Caravel Regular

Caravel Medium

Caravel Semibold

Caravel Bold

{BUTTERSCOTCH+MILK}

505.854

CITATION SOURCE: Mörsch, Emil (1909). **Concrete-steel Construction:**
(**Der Eisenbetonbau**). The Engineering News Publishing Company. pp. 20–25.

Frame-type

SUPER

1-cubic-foot (0.028 m³) of concrete would be made using 22 lb
(10.0 kg) cement, 10 lb (4.5 kg) water, 41 lb (19 kg) dry sand, 70

#VC.092_DEA

— BITTERS & GIN TONIC : ONLY £9.65 —

PONTIFEX?

$\frac{3}{8}$ candy $\frac{1}{6}$ milk and $\frac{1}{9}$ love

Måße

#6

LEGENDS AND HISTORY
OF COMIC BOOKS

There is no consensus amongst
theorists and historians on a definition
of comics; some emphasize the

»Iss Süßigkeiten!«

CONCRETE MIXES CAN ALSO BE DESIGNED

LIGHT
60 PT

Chapter 24. Huxabies

LIGHT
24 PT

Joseph Monierus, a French gardener and known to be one of the main inventors of

LIGHT
11 PT

Cerul (planetar) este partea atmosferei sau a spațiului vizibil de la suprafața unui corp ceresc. E dificil a definii precis din câteva motive. În timpul zilei, cerul apare ca o suprafață albastră profundă datorită dispersiei atmosferice a luminii

LIGHT
16 PT

A BETON ÉS A VASBETON A VILÁGON
A LEGELTERJEDTEBB ÉPÍTŐANYAG,

LIGHT
8 PT
–
7 PT

Because the actual bond stress level varies along the length of a bar anchored in a zone of tension, current international codes of specifications use the concept of the development length instead of bond stress. The main requirement for safety against bond failure is to provide a quite sufficient extension of the length of the bar beyond the point where the steel is required for to

Betonul armat este un material compozit format prin turnarea betonului peste o armătură formată din bare și sârme de oțel, uneori și din polimeri, care se transformă prin uscare într-un compus dur și rigid. Se folosește în construcții la elemente de rezistență ca: stâlpi, grinzi, plafoane, fundații, diafragme, traverse de cale ferată, baraje hidrotehnice, etc. Se interzice utilizarea de apă sau apă salmastră la

REGULAR
60 PT

Chapter 14. Corrosions

REGULAR
24 PT

Joseph Monier, a French gardener and known to be one of the main inventors

REGULAR
11 PT

Cerul (planetar) este partea atmosferei sau a spațiului vizibil de la suprafața unui corp ceresc. E dificil a definii precis din câteva motive. În timpul zilei, cerul apare ca o suprafață albastră profundă datorită dispersiei atmosferice a luminii

REGULAR
16 PT

A BETON ÉS A VASBETON A VILÁGON
A LEGELTERJEDTEBB ÉPÍTŐANYAG,

REGULAR
8 PT
–
7 PT

Because actual bond stress level varies along the length of a bar anchored in a zone of tension, current international codes of specifications use the concept of the development length instead of bond stress. The main requirement for safety against bond failure is to provide a sufficient extension of the length of the bar beyond the point where the steel is

Betonul armat este un material compozit format prin turnarea betonului peste o armătură formată din bare și sârme de oțel, uneori și din polimeri, care se transformă prin uscare într-un compus dur și rigid. Se folosește în construcții la elemente de rezistență ca: stâlpi, grinzi, plafoane, fundații, diafragme, traverse de cale ferată, baraje hidrotehnice, etc. Se interzice utilizarea de apă de mare sau

MEDIUM
60 PT

Chapter 5. Schmoller

MEDIUM
24 PT

Joseph Monier, a French gardener and known to be one of the main inventors

MEDIUM
11 PT

Cerul (planetar) este partea atmosferei sau a spațiului vizibil de la suprafața unui corp ceresc. E dificil a definii precis din câteva motive. În timpul zilei, cerul apare ca o suprafață albastră din cauza dispersiei atmosferice a

MEDIUM
16 PT

A BETON ÉS A VASBETON A VILÁGON A
LEGELTERJEDTEBB ÉPÍTŐANYAG,

MEDIUM
8 PT
–
7 PT

Because the actual bond stress level varies along the length of a bar anchored in a tension zone, current international codes of specifications use the concept of the development length instead of bond stress. The main requirement for safety against bond failure is to provide a quite sufficient extension of the length of the bar beyond the point where the

Betonul armat este un material compozit format prin turnarea betonului peste o armătură formată din bare și sârme de oțel, uneori și din polimeri, care se transformă într-un compus dur și rigid. Se folosește în construcții la elemente de rezistență ca: stâlpi, grinzi, plafoane, fundații, diafragme, traverse de cale ferată, baraje hidrotehnice, etc. Se interzice utilizarea de

SEMIBOLD
60 PT

Chapter 8. Romertos

SEMIBOLD
24 PT

Joseph Monier, a French gardener and known to be one of the principal

SEMIBOLD
11 PT

Cerul (planetar) este partea atmosferei, a spațiului vizibil, de la suprafața unui corp ceresc. E dificil a definii precis din câteva motive. În timpul zilei, cerul apare ca o suprafață albastră din cauza dispersiei

SEMIBOLD
16 PT

... ÉS A VASBETON A VILÁGON A
LEGELTERJEDTEBB ÉPÍTŐANYAG,

SEMIBOLD
8 PT
–
7 PT

Because actual bond stress level varies along the length of a bar anchored in a zone of tension, current international codes of specifications use the concept of the development length instead of bond stress. The main requirement for safety against bond failure is to provide a sufficient extension of the length of the bar beyond

Betonul armat este un material compozit format prin turnarea betonului peste o armătură formată din bare și sârme de oțel, uneori și din polimeri, care se transformă într-un compus dur și rigid. Se folosește în construcții la elemente de rezistență ca: stâlpi, grinzi, plafoane, fundații, diafragme, traverse de cale ferată, baraje hidrotehnice, etc. Se interzice utilizarea de

BOLD
60 PT

Chapter 1. Yoghurts

BOLD
24 PT

Joseph Mone, a French gardener and known to be one of the inventors

BOLD
11 PT

Cerul (planetar) este partea atmosferei a spațiului vizibil de la suprafața unui corp ceresc. E dificil a definii precis din câteva motive. În timpul zilei, cerul apare ca o suprafață albastră din cauza dispersiei

BOLD
16 PT

... ÉS A VASBETON A VILÁGON A LEGELTERJEDTEBB ÉPÍTŐANYAG,

BOLD
8 PT
—
7 PT

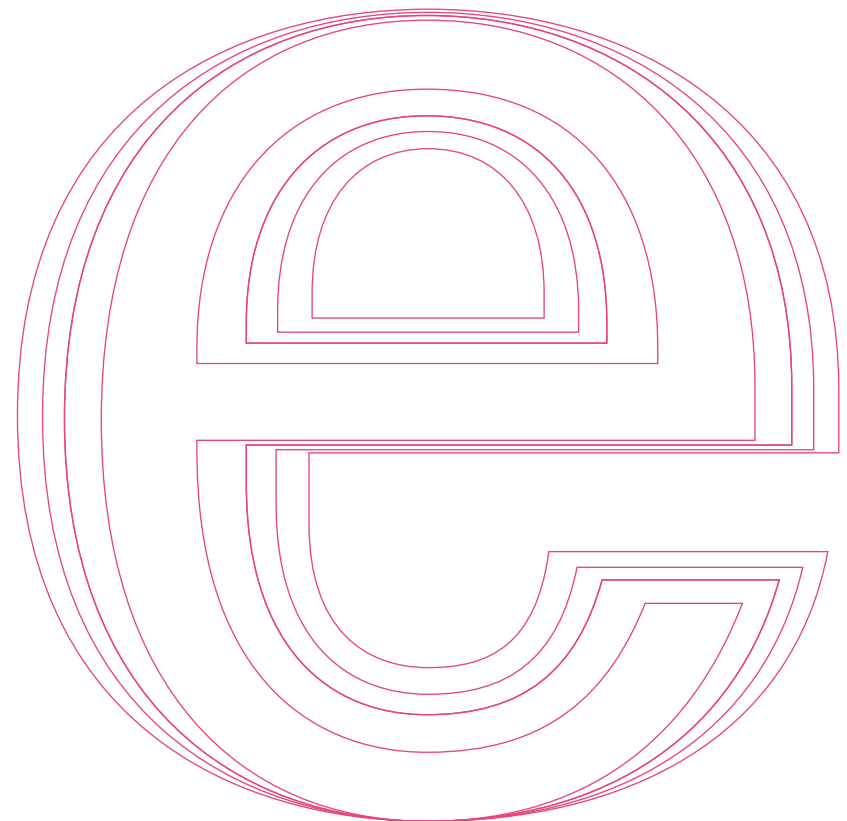
Because the actual bond stress level varies along the length of a bar anchored in a tension zone, current international codes of specifications use the concept of the development length instead of bond stress. The main requirement for safety against bond failure is to provide a quite sufficient extension of the length of

Betonul armat este un compozit format prin turnarea betonului peste o armătură formată din bare și sârme de oțel, uneori și din poli-meri, care se transformă într-un compus dur și rigid. Se folosește în construcții la elemente de rezistență ca: stâlpi, grinzi, plafoane, fundații, diafragme, traverse de cale ferată, baraje hidrotehnice, etc. Interzice

STYLES PROGRESSION

a — a — a — a — a

LIGHT REGULAR MEDIUM SEMIBOLD BOLD



FULL SET OF CASE PUNCTUATION (AVAILABLE VIA THE ALL-CAPS OPENTYPE FEATURE)

»HO-PE·NO}]]

OLDSTYLE PROPORTIONAL FIGURES

0123456789

OLDSTYLE TABULAR FIGURES

0123456789

LINING PROPORTIONAL FIGURES

0123456789

LINING TABULAR FIGURES (COMPACT FORM)

0123456789

5Rhangingey

LINING FIGURES ARE SLIGHTLY LOWER THAN CAPS

ASCENDERS ALIGN WITH CAPS

ALL STROKES TERMINATE AT 90° ANGLES

VERY LIGHT STROKE WHERE ARM MEETS STEM, AS WELL AS TAPERED SPUR.

MILD CONTRAST, VERTICAL STRESS

LARGE X-HEIGHT AND SHORT ASCENDERS/ DESCENDERS

LARGE COUNTERS

STRAIGHT LEG

GENEROUS SPACING FOR TEXT USE

BINOCULAR LOWERCASE G WITH WIDE BOTTOM COUNTER

AN EXTENSIVE SET OF CURRENCY SYMBOLS IS AVAILABLE IN ALL WEIGHTS. THE CURRENCY SYMBOLS ALIGN WITH THE FIGURES.

ONLY ₹57 €2.99 ₺520
₹90 \$80 ₣50 ¥80 £35

FULL SETS OF NUMERATORS AND DENOMINATORS AVAILABLE FOR BUILDING ANY FRACTIONS (USING THE OPENTYPE FRACTION FEATURE). THESE CAN ALSO BE USED IN CHEMICAL FORMULAS AND FOOTNOTE NUMBERING.

2/3 ▶ ⅔ 9/62 ▶ ⅑₆₂
6/7 ▶ ⅔ 8/71 ▶ ⅘₇₁
1/4 ▶ ¼ 18/9 ▶ ⅔

The design³⁸ strength is the strength of a material, including a material-safety factor. The value²⁷ of the safety factor¹⁵ generally ranges from 0.75⁶–0.85e⁴ in the stress design with formula H₄Cl₅O₂.

LOWERCASE

a b c d e f g h i j k l m n o p q r s t u v
w x y z

UPPERCASE

ABCDEFGHIJKLMNOPQRSTUVWXYZ

LINING FIGURES (DEFAULT)

0123456789

OLDSTYLE FIGURES

0123456789

NUMERATORS AND DENOMINATORS

0 1 2 3 4 5 6 7 8 9 0 1 2 3 4 5 6 7 8 9

LIGATURES

fi fl ffi ffl

CURRENCY AND MISCELLANEOUS SYMBOLS

€ \$ ¥ £ ₹ ¢ ₱ ₪ ° ¹ ² ³ # % ‰ ' " † ‡ /
 ¼ ½ ¾ ⅛ ⅜ ⅝ ⅞ § ¶ + − ± ÷ × = < > ≤ ≥
 ≠ ≈ ¬ ° μ π ∂ ∫ ^ ~ Ω Δ Σ Π √ ∞ ℓ ♦

STANDARD PUNCTUATION

_ - - — () [] { } ' ' " " , , < > « » * . , : ;
 ... ! i ? ¿ / \ | ¡ @ & . • © ® ™

CASE PUNCTUATION

— — — () [] { } ‹ › ‹‹ ›› · •

LOWERCASE FOREIGN CHARACTERS

à á â ã ä å ā ă ą æ ç ć č d' ð ñ è é ê
ë ē è ę ě ğ ħ ì í î ï ĵ ħ Ĺ ĺ Ľ ł ñ ñ ñ ñ
ò ó ô õ ö ō ő ø œ ř ʀ ř ś š ſ ş ß ʈ ʉ ʊ
ù ú û ü ū ŭ ů ʋ ý ÿ ź ž ž ƚ

UPPERCASE FOREIGN CHARACTERS

À Á Â Ã Ä Å Ą Ć Ç Ĉ Ċ Ď Đ ð
È É Ê Ë Ē Ė Ę Ě Ğ Ġ Ĩ Î Ï Ĵ Ĳ Ļ Ľ
Ł Ń Ņ Ň Ñ Ò Ó Ô Õ Ö Ő Œ Æ Ř Ŕ
Ř Š Š Š Š Ť Ŧ Ũ Ú Û Ü Ū Ů Ú Ů
Ý Ÿ Ž Ž Ž Þ

CARAVEL REGULAR 8/13 PT

¶ The design of #typefaces has developed alongside the development of typesetting systems. Although typography has evolved significantly from its origins⁴⁶, it is a \$37.50 conservative art that tends to cleave closely to tradition. This happens because legibility is 97% paramount, and so the typefaces that are **most readable usually are retained. In addition, the long evolution** of typography is inextricably intertwined with lettering by hand & 24.000 related artistic forms, especially formal_styles, which thrived for centuries **preceding @typography — and so the evolution of typography must be discussed with Σe25 reference to this relationship.** In the nascent stages of European printing, the typeface (blackletter, or Gothic) was therefore designed in [imitation of #25 the popular] hand-lettering styles of scribes. Initially*, this typeface was difficult to read, †1854 because each letter was set in place individually and made to fit tightly into the

LIGHT

BOLD

SEMIBOLD

MEDIUM

CARAVEL REGULAR 21/26 PT

¶ The design of #typefaces has developed alongside the development of typesetting systems. Although typography has evolved significantly from its origins⁴⁶, it is a largely \$398.50 conservative art that tends to cleave closely to tradition. This happens because legibility is 7% paramount, and so the typefaces that are **most readable usually are retained. In addition, the long evolution** of typography is inextricably intertwined with lettering by hand & related artistic forms, especially formal_styles, which thrived for centuries £75.084 **preceding @typography — and so the evolution of typography must be discussed with Σe25 reference to this relationship.** In the nascent stages of European printing, the typeface (blackletter, or Gothic) was therefore designed in [imitation of #25 the popular] hand-lettering styles of scribes. Initially*, this typeface was difficult to read, †1854 because each letter was set in place individually and made to fit tightly into the allocated space. The art of manuscript writing, whose

We

Broadcast |
music

FM
105.8

Fridays at 19:00
135 minutes
of non-stop music

THE GREATEST
DISCOVERIES OF
19TH CENTURY

1852

FUEL EFFICIENT DIESEL



¶ Fuel efficiency is a special form of thermal efficiency, meaning the efficiency of a process that **converts chemical potential energy contained in a carrier fuel into kinetic energy** or work. Overall fuel efficiency may vary per device, which in turn may vary per application fuel efficiency, especially fossil fuel power plants or industries dealing with combustion, such as ammonia production during the Haber process.

¶ In the context of transport, fuel economy is the energy efficiency of a particular vehicle, given as a **ratio of distance traveled per unit of fuel consumed**. Fuel economy is expressed in miles per gallon (mpg) in the

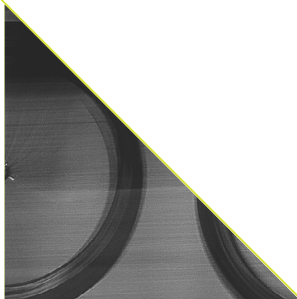
USA and usually also in the UK (imperial gallon); there is sometimes confusion as the imperial gallon is 20% larger than the US gallon so that mpg values are not directly comparable. In countries using the **metric system** fuel economy is stated in kilometres per litre (km/L) in the Netherlands, Denmark and in several Latin American or Asian countries such as India, Japan, South Korea, or as the reciprocal ratio, "fuel consumption" in liters per 100 kilometers (L/100 km) in much of Europe, Canada, New Zealand and Australia. Litres per mil are used in Norway and Sweden.

Company

Our uniquely crafted designs for you

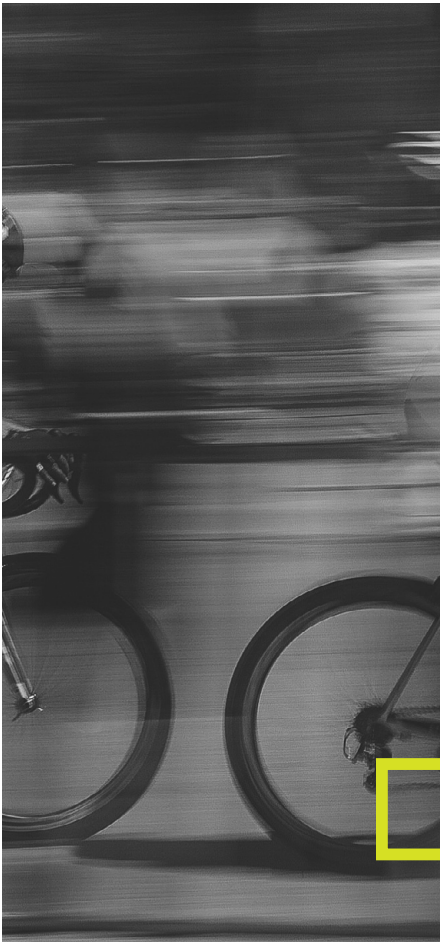
We pride ourselves on quick delivery and utmost quality.

Our bikes are top-quality



For prices go to our website

Deliver unique quality items despite weather conditions.



We embrace motivation

Getting yourself motivated is about g
For this reason, you should start every
morning routine, which will help you
be alert, focused and prepared to cre
part of your routine every day, you sh
reviewing and refining your plan, or w
refers to as your 8 for the Day routine

Just as in business, a mission statement is useless without a plan to execute on it.

CORNEL BARTOLUS

THE DAY
GRASS
GREW
35 METERS

a prize-winning story
about love and hope

📍 NEW YORK

CleanMachine

Give your precious items the
cleaning & care they deserve

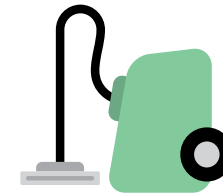
Sign up today

How it works



The right product

Here at CleanMachine, we have 20 years of experience to find just the right product that will clean your items.



We clean anything

Be it a wool rug, your favorite stuffed animal, or your grandma's ring, just let us pick it up and clean it for you.



Hygiene above all

Our standards are way above those of the industry. All our employees are required to fill out an F-294 daily.

Our promise

No matter how small your item is, we will treat it with utmost care, as if it were our own. We will consult with you on the cleaning strategy and will never charge you more than quoted.

CleanMachine is a smart and personalized solution, and we strive to give you the best possible experience.