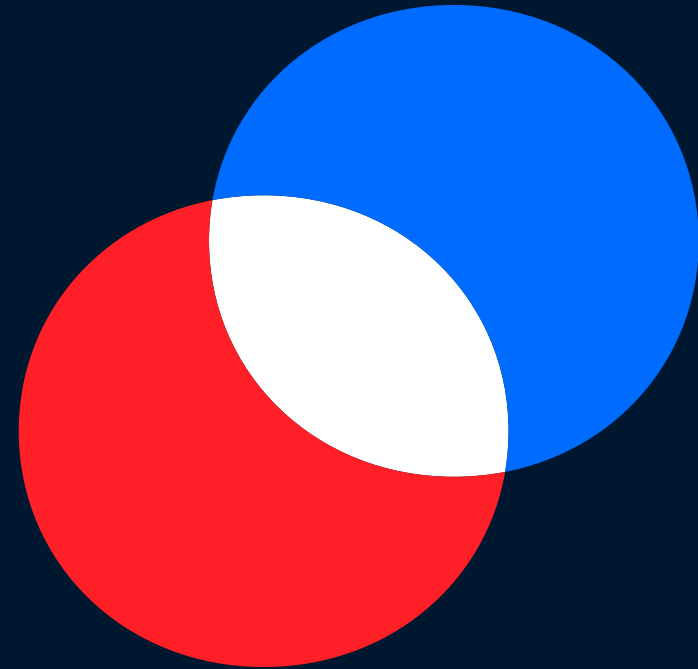


# Duplet Duplet Open

**Name:** Duplet**Classification:** Geometric Sans**Designers:** Diana Ovezee and Rafal Buchner**Designed in:** 2022**Styles:** 7 weights + italics**Stylistic sets:** 9**Glyphs:** 490**Name:** Duplet Open**Classification:** Geometric Sans**Designers:** Diana Ovezee and Rafal Buchner**Designed in:** 2022**Styles:** 7 weights + italics**Stylistic sets:** 9**Glyphs:** 490

When you are looking for a typeface that can carry a tech message to readers, helps make communication easier and looks good, too – chances are high that you'll select a geometric sans serif. These are the typefaces of today and tomorrow. From the headlines on news websites to the texts in apps and even company logos rendered large or small, geometric sans serifs are everywhere.

Duplet is part of a larger superfamily and can be combined with its relatives: Duplet Open and Duplet Rounded.

**Duplet** is an iconic geometric sans-serif with minimal contrast and tightly closed apertures.

**Duplet Open** is its twin brother with wide open apertures, which help with better rendering at small sizes.

Duplet is a superfamily of **geometric sans serif** fonts from Indian Type Foundry with more versatility than you might expect. These timeless and iconic fonts are perfect for use in headlines on news websites, in apps and even company logos rendered large or small,

The system is divided across three families: **Duplet**, **Duplet Open** and **Duplet Rounded**. Each of the families has 14 fonts. Those include seven weights ranging from Thin through Extrabold and companion slanted italics. All of the Duplet superfamily fonts include more than 450 glyphs each. That character set allows for several alternates, and it covers all of the European languages written with the Latin script.

Since the Duplet families are geometric, the round characters and round-parts of letters appear either as circles or slanted circular forms (like you see in the italics). Letterforms are very **low-contrast**, with strokes that seem even in thickness.



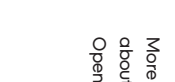
Duplet Rounded is presented thoroughly in a separate specimen.

Now let's talk about the **delicious alternates**. The default form of the 'a' in each font is single-storey. The large round bowl drives Duplet's inherent geometry home! But there is a double-storey 'a' as an OpenType alternate 'a'. The default 'g' is also single-story, and its bottom stroke is flattened, giving it a streamlined, almost techy look. Duplet fonts each feature three more 'g' versions as alternate characters. There are also alternates for 'k', 'u', 'G', 'K', 'M' and the ampersand (&).

The character sets include **case-sensitive forms** as well. Those are punctuation marks that are vertically repositioned and look better in all-caps texts. When it comes to numerals, both proportional and tabular lining figures are there – as well as fractions, superior numerals, and inferiors.

In the standard **Duplet** family, the letterforms' terminals end on the horizontal. That is particularly noticeable when you look at the 'e' or the 's'. In sans-serif typefaces, this rational, high modernist trait was all the rage in the mid-20th century. It makes letters look very streamlined and engineered. At the same time, however, it can sometimes make the counters or negative spaces inside letterforms look tight or closed. They can even begin to feel claustrophobic.

**Duplet Open** makes use of a completely different terminal-design strategy. Strokes on letters like 'e' and 's' end in diagonal shears rather than horizontals. That makes the letters' counters more open. They render a little less dark and may even be slightly more legible.

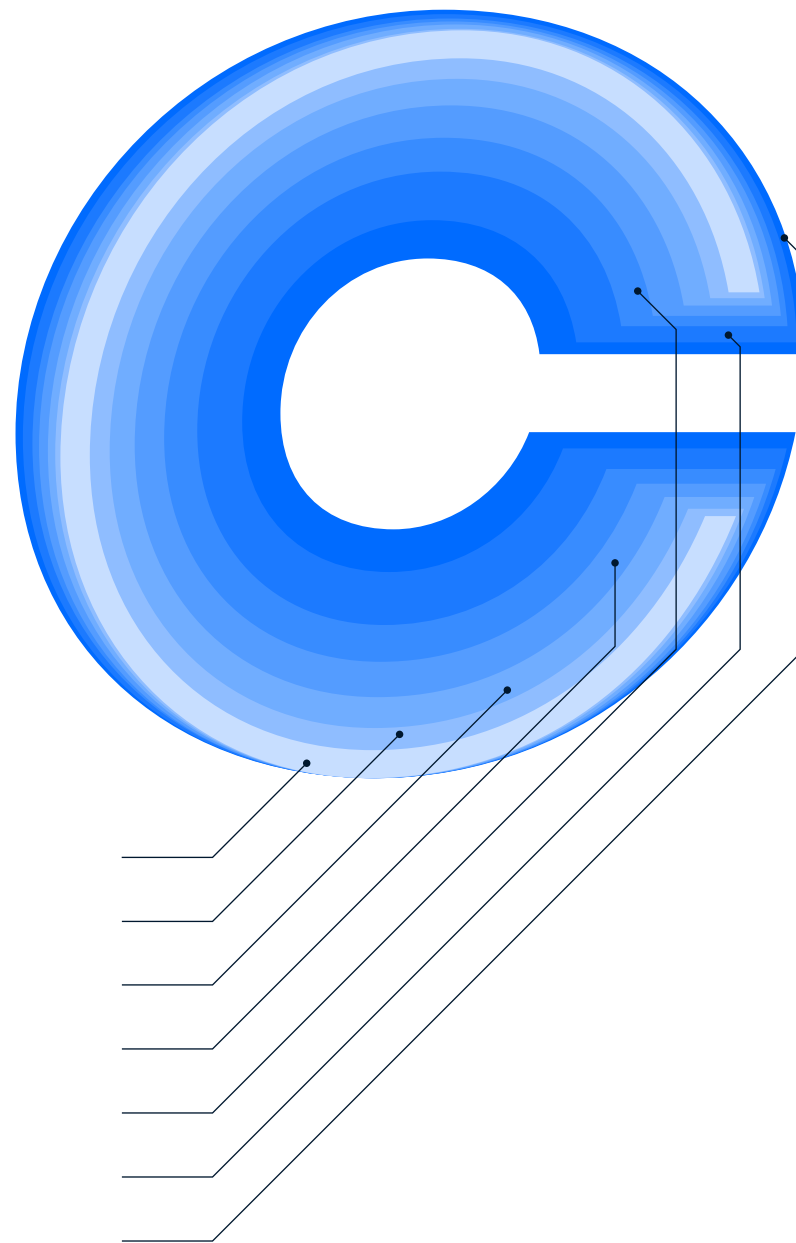


More illustrative details about Duplet and Duplet Open on pages 43–44.

# Duplet

1. Thin
2. Extralight
3. Light
4. Regular
5. Semibold
6. **Bold**
7. **Extrabold**

1. *Thin Italic*
2. *Extralight Italic*
3. *Light Italic*
4. *Regular Italic*
5. *Semibold Italic*
6. ***Italic***
7. ***Extrabold Italic***



Thin

McNally RJ (2003)

Geometry (from the Ancient Greek: geo- "earth", -metron "measurement") is, with

Thin  
Italic

Særleg Undersøkt

Geometry (from the Ancient Greek: geo- "earth", -metron "measurement") is, together

Extralight

LA MULTIPLICITÉ

with arithmetic, one of the oldest branches of mathematics. It is concerned with

Extralight  
Italic

4. Psychotherapie

with arithmetic, one of the oldest branches of mathematics. It is concerned with

Light

345 Personalities

with properties of space that are related with distance, shape, size, and above all

Light  
Italic

'Vremea Dualistă'

with properties of space that are related with distance, shape, size, and above all

Regular

Taoistisk Religion

relative position of figures. a mathematician who works in the field of geometry

Regular  
Italic

– När det ändras

relative position of figures. a mathematician who works in the field of geometry

Semibold

Barmhärtighet?

is called a geometer. Until the 19th century, geometry was almost exclusively

Semibold  
Italic

Dr. Jekyll &amp; Mr. H

is called a geometer. Until the 19th century, geometry was almost exclusively

Bold

ISBN 973-9877-2

devoted to Euclidean geometry, which includes notions of point, line, plane

Bold  
Italicconjunto  $P=(X, \leq)$ 

devoted to Euclidean geometry, which includes the notions of point, line, plane

Extrabold

VÄLGÖRENHET

distance, angle, surface, and curve, as fundamental concepts. More to be ...

Extrabold  
Italic

JSTOR 2598327

distance, angle, surface, and curve, as fundamental concepts. More to be ...

Thin  
34 pt

abcdefghijklmnopqrstuvwxyz  
 ABCDEFGGGHIJKKLMMNOPQRSTUVWXYZ  
 0123456789?!#—,“—”({[\$€£₹@&&#\*©®

Thin  
19 pt

Dualistic motifs in mythologies<sup>2</sup>  
 can be observed in all inhabited  
 continents. Zolotaryov (b. 1872)  
 concludes that they cannot be  
 explained by diffusion but are

Thin  
Italic  
19 pt

*Dualistic motifs in mythologies<sup>2</sup>  
 can be observed in all inhabited  
 continents. Zolotaryov (b. 1872)  
 concludes that they cannot be  
 explained by diffusion but are*

Thin  
97 pt

Hushåll

Thin  
Italic  
97 pt

*Jagersi*

Thin  
13 pt

When used with regards to multiple gods, dualism  
 may refer to duotheism, bitheism, or ditheism.  
 Although ditheism/bitheism imply moral dualism,

Thin  
Italic  
13 pt

*When used with regards to multiple gods, dualism  
 may refer to duotheism, bitheism, or ditheism.  
 Although ditheism/bitheism imply moral dualism,*

Thin  
8 pt

Furthermore, in a bitheistic system, by contrast, where the two deities are not in  
 conflict or opposition, one could be male and the other female (cf. duotheism).  
 One well-known example of a bitheistic or duotheistic theology based on gender  
 polarity is found in the neopagan religion of Wicca founded by Gerald Brosseau  
 Gardner (13 June 1884 – 12 February 1964). In Wicca, dualism is represented in

Thin  
Italic  
8 pt

*Furthermore, in a bitheistic system, by contrast, where the two deities are not in  
 conflict or opposition, one could be male and the other female (cf. duotheism).  
 One well-known example of a bitheistic or duotheistic theology based on gender  
 polarity is found in the neopagan religion of Wicca founded by Gerald Brosseau  
 Gardner (13 June 1884 – 12 February 1964). In Wicca, dualism is represented in*

Extralight  
34 pt

abcdefghijklmnopqrstuvwxyz  
 ABCDEFGGGHIJKKLMMNOPQRSTUVWXYZ  
 0123456789?!#—,“—”({[\$€£₹@&&#\*©®

Extralight  
19 pt

Dualistic motifs in mythologies<sup>2</sup>  
 can be observed in all inhabited  
 continents. Zolotaryov (b. 1872)  
 concludes that they cannot be  
 explained by diffusion but aren't

Extralight  
Italic  
19 pt

*Dualistic motifs in mythologies<sup>2</sup>  
 can be observed in all inhabited  
 continents. Zolotaryov (b. 1872)  
 concludes that they cannot be  
 explained by diffusion but aren't*

Extralight  
97 pt

EVRENI

Extralight  
Italic  
97 pt

*Mange*

Extralight  
13 pt

When used with regards to multiple gods,  
 dualism may refer to duotheism, bitheism, or  
 ditheism. Although ditheism/bitheism imply

Extralight  
Italic  
13 pt

*When used with regards to multiple gods, dualism  
 may refer to duotheism, bitheism, or ditheism.  
 Although ditheism/bitheism imply moral dualism,*

Extralight  
8 pt

Furthermore, in a bitheistic system, by contrast, where the two deities are not in  
 conflict or opposition, one could be male and the other female (cf. duotheism).  
 One well-known example of a bitheistic or duotheistic theology based on gender  
 polarity is found in the neopagan religion of Wicca founded by Gerald Brousseau  
 Gardner (13 June 1884 – 12 February 1964). In Wicca, dualism is represented in

Extralight  
Italic  
8 pt

*Furthermore, in a bitheistic system, by contrast, where the two deities are not in  
 conflict or opposition, one could be male and the other female (cf. duotheism).  
 One well-known example of a bitheistic or duotheistic theology based on gender  
 polarity is found in the neopagan religion of Wicca founded by Gerald Brousseau  
 Gardner (13 June 1884 – 12 February 1964). In Wicca, dualism is represented in*

Light  
34 pt

abcdefghijklmnopqrstuvwxyz  
 ABCDEFGGGHIJKKLMMNOPQRSTUVWXYZ  
 0123456789?!#—,“—”({[\$€£₹@&&#\*©®

Light  
19 pt

Dualistic motifs in mythologies<sup>2</sup>  
 can be observed in all inhabited  
 continents. Zolotaryov (b. 1872)  
 concludes that they cannot be  
 explained by diffusion but aren't

Light  
Italic  
19 pt

*Dualistic motifs in mythologies<sup>2</sup>  
 can be observed in all inhabited  
 continents. Zolotaryov (b. 1872)  
 concludes that they cannot be  
 explained by diffusion but aren't*

Light  
97 pt

Duette

Light  
Italic  
97 pt

Wiecej

Light  
13 pt

When used with regards to multiple gods, dualism  
 may refer to duotheism, bitheism, or ditheism.  
 Although ditheism/bitheism imply moral dualism,

Light  
Italic  
13 pt

*When used with regards to multiple gods, dualism  
 may refer to duotheism, bitheism, or ditheism.  
 Although ditheism/bitheism imply moral dualism,*

Light  
8 pt

Furthermore, in a bitheistic system, by contrast, where the two deities are not in  
 conflict or opposition, one could be male and the other female (cf. duotheism).  
 One well-known example of a bitheistic or duotheistic theology based on gender  
 polarity is found in the neopagan religion of Wicca founded by Gerald Brosseau  
 Gardner (13 June 1884 – 12 February 1964). In Wicca, dualism is represented in

Light  
Italic

*Furthermore, in a bitheistic system, by contrast, where the two deities are not in  
 conflict or opposition, one could be male and the other female (cf. duotheism).  
 One well-known example of a bitheistic or duotheistic theology based on gender  
 polarity is found in the neopagan religion of Wicca founded by Gerald Brosseau  
 Gardner (13 June 1884 – 12 February 1964). In Wicca, dualism is represented in*

Regular  
34 pt

abcdefghijklmnopqrstuvwxyz  
 ABCDEFGGHIJJKLMMNOPQRSTUVWXYZ  
 0123456789? !#—,“–”( { [ \$ € £ ₹ @ & & # \* © ®

Regular  
19 pt

Dualistic motifs in mythologies<sup>2</sup>  
 can be observed in all inhabited  
 continents. Zolotaryov (b. 1872)  
 concludes that they cannot be  
 explained by diffusion but aren't

Regular  
Italic  
19 pt

*Dualistic motifs in mythologies<sup>2</sup>  
 can be observed in all inhabited  
 continents. Zolotaryov (b. 1872)  
 concludes that they cannot be  
 explained by diffusion but aren't*

Regular  
97 pt

Página

Regular  
Italic  
97 pt

*Polype*

Regular  
13 pt

When used with regards to multiple gods, dualism  
 may refer to duotheism, bitheism, or ditheism.  
 Although ditheism/bitheism imply moral dualism,

Regular  
Italic  
13 pt

*When used with regards to multiple gods, dualism  
 may refer to duotheism, bitheism, or ditheism.  
 Although ditheism/bitheism imply moral dualism,*

Regular  
8 pt

Furthermore, in a bitheistic system, by contrast, where the two deities are not  
 in conflict or opposition, one could be male and the other female (cf. duotheism).  
 One known example of a bitheistic or duotheistic theology based on gender  
 polarity is found in the neopagan religion of Wicca founded by Gerald Brosseau  
 Gardner (13 June 1884 – 12 February 1964). In Wicca, dualism is represented in

Regular  
Italic  
8 pt

*Furthermore, in a bitheistic system, by contrast, where the two deities are not  
 in conflict or opposition, one could be male and the other female (cf. duotheism).  
 One known example of a bitheistic or duotheistic theology based on gender  
 polarity is found in the neopagan religion of Wicca founded by Gerald Brosseau  
 Gardner (13 June 1884 – 12 February 1964). In Wicca, dualism is represented in*



Semibold  
34 pt

abcdefghijklmnopqrstuvwxyz  
 ABCDEFGGHIJJKLMMNOPQRSTUVWXYZ  
 0123456789?!#—,.“—”({[\$€£₹@&&#\*©®

Semibold  
19 pt

Dualistic motifs in mythologies<sup>2</sup>  
 can be observed in all inhabited  
 continents. Zolotaryov (b. 1872)  
 concludes that they cannot be  
 explained by diffusion but aren't

Semibold  
Italic  
19 pt

*Dualistic motifs in mythologies<sup>2</sup>  
 can be observed in all inhabited  
 continents. Zolotaryov (b. 1872)  
 concludes that they cannot be  
 explained by diffusion but aren't*

Semibold  
97 pt

Senior.

Semibold  
Italic  
97 pt

*Genius*

Semibold  
13 pt

When used with regards to multiple gods, dualism  
 may refer to duotheism, bitheism, or ditheism.  
 Although ditheism/bitheism imply moral dualism,

Semibold  
Italic  
13 pt

*When used with regards to multiple gods, dualism  
 may refer to duotheism, bitheism, or ditheism.  
 Although ditheism/bitheism imply moral dualism,*

Semibold  
8 pt

In a bitheistic system, by contrast, where the two deities are not in conflict  
 or in opposition, one could be male and the other female (cf. duotheism).  
 One known example of a bitheistic or duotheistic theology based on gender  
 polarity is found in the neopagan religion of Wicca founded by Gerald  
 Brousseau Gardner (13 June 1884 – 12 February 1964). In Wicca, dualism is

Semibold  
Italic  
8 pt

*In a bitheistic system, by contrast, where the two deities are not in conflict or in  
 opposition, one could be male and the other female (cf. duotheism).  
 One known example of a bitheistic or duotheistic theology based on gender  
 polarity is found in the neopagan religion of Wicca founded by Gerald Brousseau  
 Gardner (13 June 1884 – 12 February 1964). In Wicca, dualism is represented in*

Bold  
34 pt

abcdefghijklmnopqrstuvwxyz  
 ABCDEFGGHIJKKLMMNOPQRSTUVWXYZ  
 0123456789?!#—,.“-”({[\$€£₹@&&#\*©®

Bold  
19 pt

**Dualistic motifs in mythologies<sup>2</sup>  
 can be observed in all inhabited  
 continents. Zolotaryov (b. 1872)  
 concludes that they cannot be  
 explained by diffusion but are ...**

Bold  
Italic  
19 pt

***Dualistic motifs in mythologies<sup>2</sup>  
 can be observed in all inhabited  
 continents. Zolotaryov (b. 1872)  
 concludes that they cannot be  
 explained by diffusion but are ...***

Bold  
97 pt

**[16:40]**

Bold  
Italic  
97 pt

***Bionic!***

Bold  
13 pt

**When used with regards to multiple gods, this  
 word may refer to duotheism, bitheism, or even  
 ditheism. Although the latter may imply moral**

Bold  
Italic  
13 pt

***When used with regards to multiple gods, this  
 word may refer to duotheism, bitheism, or even  
 ditheism. Although the latter may imply moral***

Bold  
8 pt

**In a bitheistic system, by contrast, where the two deities are not in conflict  
 or in opposition, one could be male and the other female (cf. duotheism).  
 One known example of a bitheistic or duotheistic theology based on gender  
 polarity is found in the neopagan religion of Wicca founded by Gerald  
 Brousseau Gardner (13 June 1884 – 12 February 1964). In Wicca, dualism is**

Bold  
Italic

***In a bitheistic system, by contrast, where the two deities are not in conflict  
 or in opposition, one could be male and the other female (cf. duotheism).  
 One known example of a bitheistic or duotheistic theology based on gender  
 polarity is found in the neopagan religion of Wicca founded by Gerald  
 Brousseau Gardner (13 June 1884 – 12 February 1964). In Wicca, dualism is***

Extrabold  
34 pt

abcdefghijklmnopqrstuvwxyz  
 ABCDEFGGGHIJKKLMMNOPQRSTUVWXYZ  
 0123456789?!#—,.“-”( { [ \$ € £ ₹ @ & & # \* © ®

Extrabold  
19 pt

**Dualistic motifs in mythologies<sup>2</sup>  
 can be observed in all inhabited  
 continents. Zolotaryov (b. 1872)  
 concludes that they cannot be  
 explained by diffusion but are ...**

Extrabold  
Italic  
19 pt

***Dualistic motifs in mythologies<sup>2</sup>  
 can be observed in all inhabited  
 continents. Zolotaryov (b. 1872)  
 concludes that they cannot be  
 explained by diffusion but are ...***

Extrabold  
92 pt

**Dualin**

Extrabold  
Italic  
92 pt

***Tabaği***

Extrabold  
13 pt

**When used with regards to multiple gods, this  
 word may refer to duotheism, bitheism, or even  
 ditheism. Although the latter may imply moral**

Extrabold  
Italic  
13 pt

***When used with regards to multiple gods, this  
 word may refer to duotheism, bitheism, or even  
 ditheism. Although the latter may imply moral***

Extrabold  
8 pt

**In a bitheistic system, by contrast, where the two deities are not in conflict  
 or in opposition, one could be male and the other female (cf. duotheism).  
 One known example of a bitheistic or duotheistic theology based on gender  
 polarity is found in the neopagan religion of Wicca founded by Gerald  
 Brosseau Gardner (13 June 1884 – 12 February 1964). In Wicca, dualism is**

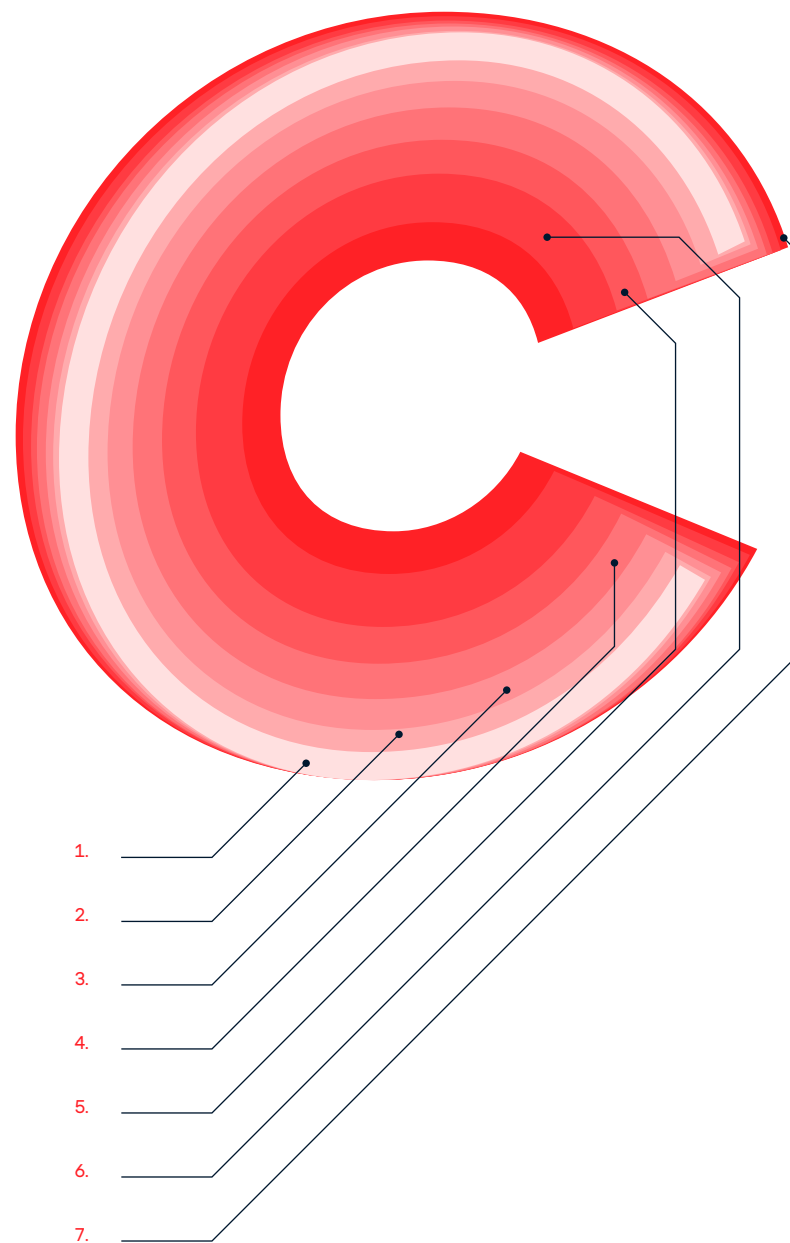
Extrabold  
Italic  
8 pt

***In a bitheistic system, by contrast, where the two deities are not in conflict  
 or in opposition, one could be male and the other female (cf. duotheism).  
 One known example of a bitheistic or duotheistic theology based on gender  
 polarity is found in the neopagan religion of Wicca founded by Gerald  
 Brosseau Gardner (13 June 1884 – 12 February 1964). In Wicca, dualism is***

# Duplet Open

1. Thin
2. Extralight
3. Light
4. Regular
5. Semibold
6. **Bold**
7. **Extrabold**

1. *Thin Italic*
2. *Extralight Italic*
3. *Light Italic*
4. *Regular Italic*
5. *Semibold Italic*
6. ***Bold Italic***
7. ***Extrabold Italic***



Thin

Boolean Algebra

Geometry (from the Ancient Greek: geo- "earth", -metron "measurement") is together

Extralight

"CREIDIÚNACHT"

with arithmetic, one of the oldest branches of mathematics. It is concerned with

Light

Gníomhaire Dual

with properties of space that are related with distance, shape, size, and above all

Regular

PL: Gastronomiq

relative position of figures. a mathematician who works in the field of geometry

Semibold

»Welle-Teilchen«

is called a geometer. Until the 19th century, geometry was almost exclusively

Bold

'FOR B.C.' — 6:45

devoted to Euclidean geometry, which includes the notions of point, line, plane

Extrabold

Meget Nedslået

distance, angle, surface, and curve, as fundamental concepts. More to be ...

Thin  
Italic

-due, tre, quattro,

Geometry (from the Ancient Greek: geo- "earth", -metron "measurement") is, together

Extralight  
Italic

P. Leych + J. Hicks

with arithmetic, one of the oldest branches of mathematics. It is concerned with

Light  
Italic

2 ARCHITECTURA

with properties of space that are related with distance, shape, size, and above all

Regular  
Italic

Goulash – €13,50

relative position of figures. a mathematician who works in the field of geometry

Semibold  
Italic

DOPPELGÄNGER

is called a geometer. Until the 19th century, geometry was almost exclusively

Bold  
Italic

FLAITHIÚLACHT

devoted to Euclidean geometry, which includes the notions of point, line, plane

Extrabold  
Italic

Fundamentally\*

distance, angle, surface, and curve, as fundamental concepts. More to be ...

Thin  
34 pt

abcdefghijklmnopqrstuvwxyz  
 ABCDEFGGGHIJKKLMMNOPQRSTUVWXYZ  
 0123456789?!#—,“—”({[\$€£₹@&&#\*©®

Thin  
19 pt

Dualistic motifs in mythologies<sup>2</sup>  
 can be observed in all inhabited  
 continents. Zolotaryov (b. 1872)  
 concludes that they cannot be  
 explained by diffusion but are

Thin  
Italic  
19 pt

*Dualistic motifs in mythologies<sup>2</sup>  
 can be observed in all inhabited  
 continents. Zolotaryov (b. 1872)  
 concludes that they cannot be  
 explained by diffusion but are*

Thin  
97 pt

Hushåll

Thin  
Italic  
97 pt

*Jagersi*

Thin  
13 pt

When used with regards to multiple gods, dualism  
 may refer to duotheism, bitheism, or ditheism.  
 Although ditheism/bitheism imply moral dualism,

Thin  
Italic  
13 pt

*When used with regards to multiple gods, dualism  
 may refer to duotheism, bitheism, or ditheism.  
 Although ditheism/bitheism imply moral dualism,*

Thin  
8 pt

In a bitheistic system, by contrast, where the two deities are not in conflict  
 or opposition, one could be male and the other female (cf. duotheism). One  
 well-known example of a bitheistic or duotheistic theology based on gender  
 polarity is found in the neopagan religion of Wicca founded by Gerald Brousseau  
 Gardner (13 June 1884 – 12 February 1964). In Wicca, dualism is represented in

Thin  
Italic  
8 pt

*In a bitheistic system, by contrast, where the two deities are not in conflict  
 or opposition, one could be male and the other female (cf. duotheism). One well-  
 known example of a bitheistic or duotheistic theology based on gender polarity  
 is found in the neopagan religion of Wicca founded by Gerald Brousseau Gardner  
 (13 June 1884 – 12 February 1964). In Wicca, dualism is represented in the belief*

Extralight  
34 pt

abcdefghijklmnopqrstuvwxyz  
 ABCDEFGGGHIJKKLMMNOPQRSTUVWXYZ  
 0123456789?!#—,“—”({[\$€£₹@&&#\*©®

Extralight  
19 pt

Dualistic motifs in mythologies<sup>2</sup>  
 can be observed in all inhabited  
 continents. Zolotaryov (b. 1872)  
 concludes that they cannot be  
 explained by diffusion but are

Extralight  
Italic  
19 pt

*Dualistic motifs in mythologies<sup>2</sup>  
 can be observed in all inhabited  
 continents. Zolotaryov (b. 1872)  
 concludes that they cannot be  
 explained by diffusion but are*

Extralight  
97 pt

EVRENI

Extralight  
Italic  
97 pt

*Mange*

Extralight  
13 pt

When used with regards to multiple gods,  
 dualism may refer to duotheism, bitheism, or  
 ditheism. Although ditheism/bitheism imply

Extralight  
Italic  
13 pt

*When used with regards to multiple gods, dualism  
 may refer to duotheism, bitheism, or ditheism.  
 Although ditheism/bitheism imply moral dualism,*

Extralight  
8 pt

In a bitheistic system, by contrast, where the two deities are not in conflict  
 or opposition, one could be male and the other female (cf. duotheism). One  
 well-known example of a bitheistic or duotheistic theology based on gender  
 polarity is found in the neopagan religion of Wicca founded by Gerald Brousseau  
 Gardner (13 June 1884 – 12 February 1964). In Wicca, dualism is represented in

Extralight  
Italic  
8 pt

*In a bitheistic system, by contrast, where the two deities are not in conflict  
 or opposition, one could be male and the other female (cf. duotheism). One well-  
 known example of a bitheistic or duotheistic theology based on gender  
 polarity is found in the neopagan religion of Wicca founded by Gerald Brousseau  
 Gardner (13 June 1884 – 12 February 1964). In Wicca, dualism is represented in the belief*

Light  
34 pt

abcdefghijklmnopqrstuvwxyz  
 ABCDEFGGHIJKKLMMNOPQRSTUVWXYZ  
 0123456789?!#—,“–”({[\$€£₹@&&#\*©®

Light  
19 pt

Dualistic motifs in mythologies<sup>2</sup>  
 can be observed in all inhabited  
 continents. Zolotaryov (b. 1872)  
 concludes that they cannot be  
 explained by diffusion but are

Light  
Italic  
19 pt

*Dualistic motifs in mythologies<sup>2</sup>  
 can be observed in all inhabited  
 continents. Zolotaryov (b. 1872)  
 concludes that they cannot be  
 explained by diffusion but are*

Light  
97 pt

# Duette

Light  
Italic  
97 pt

# Wiecej

Light  
13 pt

When used with regards to multiple gods, dualism  
 may refer to duotheism, bitheism, or ditheism.  
 Although ditheism/bitheism imply moral dualism,

Light  
Italic  
13 pt

*When used with regards to multiple gods, dualism  
 may refer to duotheism, bitheism, or ditheism.  
 Although ditheism/bitheism imply moral dualism,*

Light  
8 pt

In a bitheistic system, by contrast, where the two deities are not in conflict  
 or opposition, one could be male and the other female (cf. duotheism). One  
 well-known example of a bitheistic or duotheistic theology based on gender  
 polarity is found in the neopagan religion of Wicca founded by Gerald Brossseau  
 Gardner (13 June 1884 – 12 February 1964). In Wicca, dualism is represented in

Light  
Italic

*In a bitheistic system, by contrast, where the two deities are not in conflict  
 or opposition, one could be male and the other female (cf. duotheism). One well-  
 known example of a bitheistic or duotheistic theology based on gender polarity  
 is found in the neopagan religion of Wicca founded by Gerald Brossseau Gardner  
 (13 June 1884 – 12 February 1964). In Wicca, dualism is represented in the belief*



Regular  
34 pt

abcdefghijklmnopqrstuvwxyz  
 ABCDEFGGHIJKKLMMNOPQRSTUVWXYZ  
 0123456789?!#—,“–”({[\$€£₹@&&#\*©®

Regular  
19 pt

Dualistic motifs in mythologies<sup>2</sup>  
 can be observed in all inhabited  
 continents. Zolotaryov (b. 1872)  
 concludes that they cannot be  
 explained by diffusion but are

Regular  
Italic  
19 pt

*Dualistic motifs in mythologies<sup>2</sup>  
 can be observed in all inhabited  
 continents. Zolotaryov (b. 1872)  
 concludes that they cannot be  
 explained by diffusion but are*

Regular  
97 pt

Página

Regular  
Italic  
97 pt

*Polype*

Regular  
13 pt

When used with regards to multiple gods, dualism  
 may refer to duotheism, bitheism, or ditheism.  
 Although ditheism/bitheism imply moral dualism,

Regular  
Italic  
13 pt

*When used with regards to multiple gods, dualism  
 may refer to duotheism, bitheism, or ditheism.  
 Although ditheism/bitheism imply moral dualism,*

Regular  
8 pt

In a bitheistic system, by contrast, where the two deities are not in conflict  
 or opposition, one could be male and the other female (cf. duotheism). One  
 well-known example of a bitheistic or duotheistic theology based on gender  
 polarity is found in the neopagan religion of Wicca founded by Gerald Brousseau  
 Gardner (13 June 1884 – 12 February 1964). In Wicca, dualism is represented in

Regular  
Italic  
8 pt

*In a bitheistic system, by contrast, where the two deities are not in conflict  
 or opposition, one could be male and the other female (cf. duotheism). One  
 well-known example of a bitheistic or duotheistic theology based on gender  
 polarity is found in the neopagan religion of Wicca founded by Gerald Brousseau  
 Gardner (13 June 1884 – 12 February 1964). In Wicca, dualism is represented in*

Semibold  
34 pt

abcdefghijklmnopqrstuvwxyz  
 ABCDEFGGHIJKKLMMNOPQRSTUVWXYZ  
 0123456789?!#—,.“-”({[\$€£₹@&&#\*©®

Semibold  
19 pt

Dualistic motifs in mythologies<sup>2</sup>  
 can be observed in all inhabited  
 continents. Zolotaryov (b. 1872)  
 concludes that they cannot be  
 explained by diffusion but are

Semibold  
Italic  
19 pt

*Dualistic motifs in mythologies<sup>2</sup>  
 can be observed in all inhabited  
 continents. Zolotaryov (b. 1872)  
 concludes that they cannot be  
 explained by diffusion but are*

Semibold  
97 pt

Senior.

Semibold  
Italic  
97 pt

*Genius*

Semibold  
13 pt

When used with regards to multiple gods, dualism  
 may refer to duotheism, bitheism, or ditheism.  
 Although ditheism/bitheism imply moral dualism,

Semibold  
Italic  
13 pt

*When used with regards to multiple gods, dualism  
 may refer to duotheism, bitheism, or ditheism.  
 Although ditheism/bitheism imply moral dualism,*

Semibold  
8 pt

In a bitheistic system, by contrast, where the two deities are not in conflict  
 or opposition, one could be male and the other female (cf. duotheism). One  
 well-known example of a bitheistic or duotheistic theology based on gender  
 polarity is found in the neopagan religion of Wicca founded by Gerald Brosseau  
 Gardner (13 June 1884 – 12 February 1964). In Wicca, dualism is represented in

Semibold  
Italic  
8 pt

*In a bitheistic system, by contrast, where the two deities are not in conflict  
 or opposition, one could be male and the other female (cf. duotheism). One well-  
 known example of a bitheistic or duotheistic theology based on gender  
 polarity is found in the neopagan religion of Wicca founded by Gerald Brosseau  
 Gardner (13 June 1884 – 12 February 1964). In Wicca, dualism is represented in the belief*

Bold  
34 pt

abcdefghijklmnopqrstuvwxyz  
 ABCDEFGGHIJKKLMMNOPQRSTUVWXYZ  
 0123456789?!#—,.“-”({[\$€£₹@&&#\*©®

Bold  
19 pt

**Dualistic motifs in mythologies<sup>2</sup>  
 can be observed in all inhabited  
 continents. Zolotaryov (b. 1872)  
 concludes that they cannot be  
 explained by diffusion but are ...**

Bold  
Italic  
19 pt

***Dualistic motifs in mythologies<sup>2</sup>  
 can be observed in all inhabited  
 continents. Zolotaryov (b. 1872)  
 concludes that they cannot be  
 explained by diffusion but are ...***

Bold  
97 pt

**—1962**

Bold  
Italic  
97 pt

***Bionic!***

Bold  
13 pt

**When used with regards to multiple gods, this  
 word may refer to duotheism, bitheism, or even  
 ditheism. Although the latter may imply moral**

Bold  
Italic  
13 pt

***When used with regards to multiple gods, this  
 word may refer to duotheism, bitheism, or even  
 ditheism. Although the latter may imply moral***

Bold  
8 pt

**In a bitheistic system, by contrast, where the two deities are not in conflict  
 or opposition, one could be male and the other female (cf. duotheism). One  
 well-known example of a bitheistic or duotheistic theology based on gender  
 polarity is found in the neopagan religion of Wicca founded by Gerald Brosseau  
 Gardner (13 June 1884 – 12 February 1964). In Wicca, dualism is represented in**

Bold  
Italic

***In a bitheistic system, by contrast, where the two deities are not in conflict  
 or opposition, one could be male and the other female (cf. duotheism). One  
 well-known example of a bitheistic or duotheistic theology based on gender  
 polarity is found in the neopagan religion of Wicca founded by Gerald Brosseau  
 Gardner (13 June 1884 – 12 February 1964). In Wicca, dualism is represented in***

Extrabold  
34 pt

abcdefghijklmnopqrstuvwxyz  
 ABCDEFGGHIJJKLMMNOPQRSTUVWXYZ  
 0123456789?!#—,.“-”( { [ \$ € £ ₹ @ & & # \* © ®

Extrabold  
19 pt

**Dualistic motifs in mythologies<sup>2</sup>  
 can be observed in all inhabited  
 continents. Zolotaryov (b. 1872)  
 concludes that they cannot be  
 explained by diffusion but are ...**

Extrabold  
Italic  
19 pt

**Dualistic motifs in mythologies<sup>2</sup>  
 can be observed in all inhabited  
 continents. Zolotaryov (b. 1872)  
 concludes that they cannot be  
 explained by diffusion but are ...**

Extrabold  
92 pt

**Tabaği**

Extrabold  
Italic  
92 pt

***Dualin***

Extrabold  
13 pt

**When used with regards to multiple gods, this  
 word may refer to duotheism, bitheism, or even  
 ditheism. Although the latter may imply moral**

Extrabold  
Italic  
13 pt

***When used with regards to multiple gods, this  
 word may refer to duotheism, bitheism, or even  
 ditheism. Although the latter may imply moral***

Extrabold  
8 pt

**In a bitheistic system, by contrast, where the two deities are not in conflict  
 or opposition, one could be male and the other female (cf. duotheism).  
 One well-known example of a bitheistic or duotheistic theology based  
 on gender polarity is found in the neopagan religion of Wicca founded  
 by Gerald Brousseau Gardner (13 June 1884 – 12 February 1964). In Wicca,**

Extrabold  
Italic  
8 pt

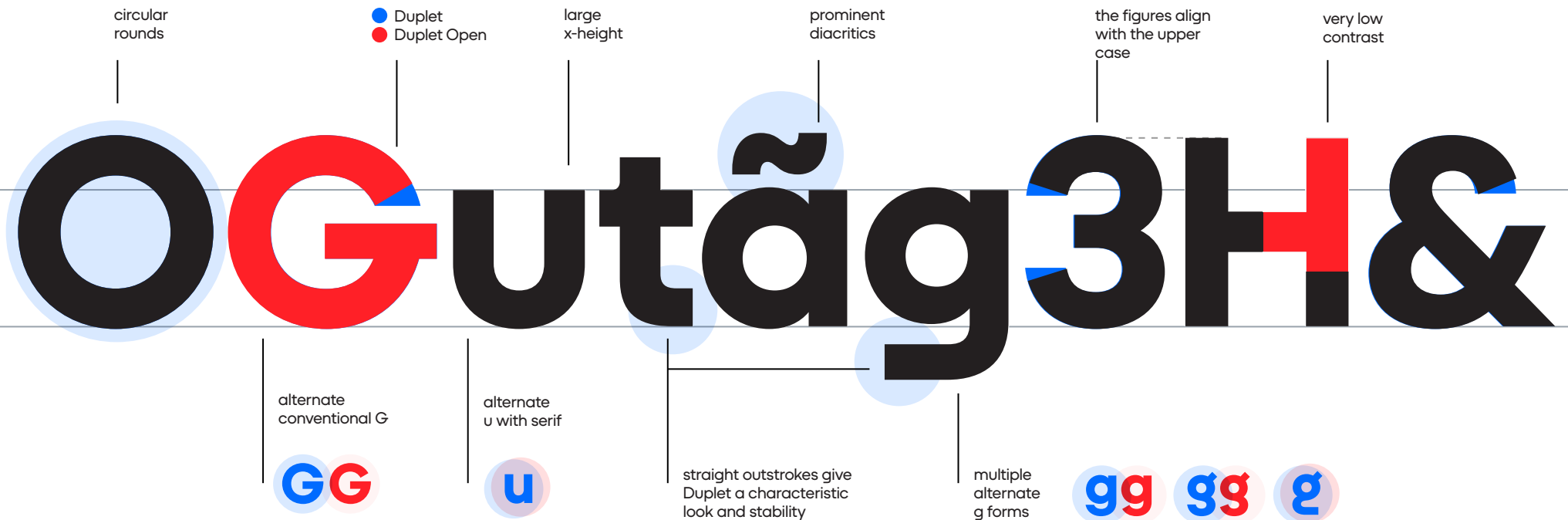
***In a bitheistic system, by contrast, where the two deities are not in conflict  
 or opposition, one could be male and the other female (cf. duotheism).  
 One well-known example of a bitheistic or duotheistic theology based  
 on gender polarity is found in the neopagan religion of Wicca founded  
 by Gerald Brousseau Gardner (13 June 1884 – 12 February 1964). In Wicca,***

Vertical proportions of the font family

Typograph'!2

● Closed or ● Open? Here are the most different glyphs between Duplet & Duplet Open:

**C G J S a c e g g s 2 3 5 &**  
**C G J S a c e g g s 2 3 5 &**



Stylistic Set 1: alternate double-story a

Calamity › Calamity

Stylistic Set 2: alternate g with curved bottom

Begging › Begging

Stylistic Set 3: alternate unconventional g

Singular › Singular

Stylistic Set 4: alternate unconventional g

Legacy › Legacy

Stylistic Set 5: alternate simple k, K

Kicking › Kicking

Stylistic Set 6: alternate u with serif

Include › Include

Stylistic Set 7: alternate conventional G

Genesis › Genesis

Stylistic Set 8: alternate narrower M

DIMMER › DIMMER

Stylistic Set 9: alternate ampersand

Dan & Jo › Dan & Jo

Case alternates

¡Hola! › ¡HOLA!

OpenType fractions

34/76 9/458 › <sup>34</sup>/<sub>76</sub> <sup>9</sup>/<sub>458</sub>

Scientific Superiors and Inferiors

N<sub>5</sub>H<sup>2</sup> m<sub>3</sub> › N<sub>5</sub>H<sup>2</sup> m<sup>3</sup>

Lower case

abcdefghijklmnopqrstuvwxyz

Upper case

A B C D E F G H I J K L M N O P Q R  
S T U V W X Y Z

## Figures (default, tabular, numerators, denominators, superiors, inferiors)

0123456789 0123456789 0123456789  
0123456789 0123456789 0123456789

## Currency and miscellaneous symbols

€ ¢ ₣ \$ £ ₹ ¥ + - × ÷ = ≠ > < ≥ ≤ ±  
 ≈ ~ ¬ ^ ∞ ∫ ∏ ∑ √ ∂ μ % ‰ ◊ @ ¶ §  
 ‡ ½ ¼ ¾ ⅛ ⅜ ⅝ ⅞ μ π ∂ ∫ ∑ ∏ √ Δ  
 Ω ◊ ° °

## Standard punctuation

( ) [ ] { } \_ - - — ‘ ’ “ ” , „ ‹ › ‹‹ ›› \* . , : ;  
... ! ¡ ? ¿ / \ | ¡ @ & · · © ® ™ ™ " #

Case-sensitive punctuation (raised punctuation for all-caps setting)

( ) [ ] { } - - — ‹ › « » ¡ ¢ / \

Lower case foreign characters

à á â ã ä å ā Ḃ æ ç ć ĉ č d' đ è é  
ê ë ē ě è ę ħ ĝ ğ ġ ģ ĥ ħ ì í î ï ÿ ĵ ĩ jî k  
κ ι λ μ ν ξ ο π ρ σ τ υ φ χ ψ ω  
í î ï ÿ ĵ ĩ jî k  
ŕ ř ŝ ś š ş ß ț ț ț ț ù ú û ü ŭ ū Ů Ű Ų  
ŵ w x y ŷ ý ÿ ÿ z ž ž þ

Upper case foreign characters

À Á Â Ã Ä Å Æ Ç È É Ê Ë Ì Í Î Ï Ñ Ò Ó Ô Õ Ö Ø Ù Ú Û Ü Ý Þ ß à á â ã ä å æ ç è é ê ë ì í î ï ñ ò ó ô õ ö ø ù ú û ü ý þ ß

## Basic alternates

agggkuKGM<sup>a</sup>&

## Alternates for foreign characters

á â ã ä å æ ç è é ê ë ì í î ï ð ñ ò ó ô õ ö ø ù ú û ü ý ÿ ß À Á Â Ã Ä Å Æ Ç È É Ê Ë Ì Í Î Ï Ð Ñ Ò Ó Ô Õ Ö Ø Ù Ú Û Ü Ý Þ à á â ã ä å æ ç è é ê ë ì í î ï ð ñ ò ó ô õ ö ø ù ú û ü ý ÿ ß

Ligatures (for legacy compatibility only)

fi fl

# 2022

The Revolution	3
Looming Change	7
Type Culture	10
Experimental	15
Virtual Reality	19

# The Typographic Revolution

## The Beginnings of the Revolution

Learning keyboarding skills is vital for today's learners and tomorrow's earners. These fun free typing games are a great way to build the foundation through typing skills that today's elementary school curriculum requires.

### Industrial Revolution

The Industrial Revolution was the transition to new manufacturing processes in Great Britain, continental Europe, and the United States, in the period from about 1760 to sometime between 1820 and 1840.<sup>1</sup> This transition included going from hand production methods to machines, new chemical manufacturing and iron production processes, the increasing use of steam power and water power, the development of machine tools and the rise of the mechanized factory system. The Industrial Revolution also led to an absolutely unprecedented rise in the rate of population growth.

Textiles were the main industry of the Industrial Revolution in terms of employment, value of output and capital invested. This industry was also the first to use modern production methods.<sup>2</sup>

The Industrial Revolution began in Great Britain and many of the technological and architectural innovations were of British origin.<sup>3,4</sup> By the mid-18th century Britain was the world's leading commercial nation, controlling a global trading empire with colonies in North America and the

1. "Industrial History of European Countries". European Route of Industrial Heritage. Council of Europe. Retrieved 2 June 2021.

2. Landes, David S. (1969). *The Unbound Prometheus*. Press Syndicate of the University of Cambridge.

3. Horn, Jeff; Rosenband, Leonard; Smith, Merritt (2010). *Reconceptualizing the Industrial Revolution*. Cambridge MA, London: MIT Press.

4. Anthony Wrigley, "Reconsidering the Industrial Revolution: England and Wales." *Journal of Interdisciplinary History* 49.01 (2018): 9–42.

01

Mission

Besides making good design we want to educate and

02

Events

Our presentations and workshops around the world.

Portfolio Presentation (Dublin, IRL) 09/03/2022

Creative Workshops (London, UK) 11/03/2022

03

Story

I began printing books with the hope of producing some which would have a definite claim to beauty, while at the same time they should be easy to read and should not dazzle the eye, or trouble the intellect of the reader by eccentricity of form in the letters.

With the begin of the internet-era I realised that the same principles could be easily applicable to the web design.

That's why **DUPLET STUDIO\_™** was founded. Together with few friends we decided to help to make content for a new technology as beautiful as we did

Back

Hello World.

Our studio specializes in awesome responsive websites and mobile apps for commerce and culture.



# Dualism

## Cybernetics

**Dualism in cybernetics refers to systems or problems in which one or more intelligent adversaries attempt to exploit the weaknesses of the investigator. Examples could include a game-playing opponent, adversarial law, evolutionary systems of predator and prey or politics attempts and similar types of scenarios.**

### Background

Dualism in cybernetics emerged from the notion that there is another form of dualism besides the classical mind-matter dualism and this is the form-matter variant first proposed by the philosopher [Anaxagoras](#) and further developed by [Plato](#) and also [Aristotle](#).<sup>1</sup> [Norbert Wiener](#), the founder of cybernetics, used this as the basis of his position that information is a different reality from matter and energy.<sup>1</sup> In the foundational discipline of cybernetics that he developed, Wiener also drew from the [Cartesian](#) dualism, which differentiated non-cognitive body and non-extended/disembodied mind.<sup>2</sup>

He outlined a dualism that opposed matter/energy with information and proposed that it is possible for the living and non-living to be within the same wall that once divided them.<sup>1</sup>

[Gregory Bateson](#) contributed to the development of this notion of dualism through his theory of mind, which proposed that the mind extends the boundaries of the brain and body so that it is able to take multiple feedback loops, which then creates the link between organisms and the rest of the natural world.<sup>3</sup> The key element here is the concept of feedback, which allows the identification of causal loops so that a system can change its behavior and receive information back from the environment concerning the external changes resulting from that changed behavior, using it as a basis for future actions.<sup>3</sup> This cybernetic idea challenged the traditional subject/object dualism.

### Opposition vs Complexity

[Wiener](#) contrasted “*Manichean devils*” (dualistic adversarial systems) with “*Augustinian devils*” — systems or problems that, though very complex and difficult to figure out, did not feature an adversary with contrary intent.<sup>4</sup> Victories or “expansions of knowledge” in the latter type of system were able to be built upon incrementally, through science (experimentation expanding empirical

knowledge bases). Wiener noted that temporary weaknesses (such as errors to perceive all components of a system) were not fatal in attempts to defeat “*Augustinian devils*” because yet another experiment could simply be pursued (and he noted that he had personally defeated many “*Augustinian devils*” with his other contributions to science and engineering). By contrast, Wiener observed that temporary lapses in judgment against “*Manichean devils*” were more often fatal or destructive, due to the desire of the opponent to “win/survive at all costs”, even by introducing deception into the system. He said that he had been defeated by many “*Manichean devils*”, such as on occasions when he was careless in chess.

Although this **duality** between complexity (in the case of the *Augustinian devils*) and opposition (in the case of *Manichean devils*) may seem obvious, it holds deep implications for many areas of science, such as game theory, computer science, network science, security science, military science, evolutionary biology, as well as cryptography.<sup>5</sup>

**[Read More  
About It  
Next Week](#)**