

KUNKUN

Name: KunKun
Style: Display Sans Serif
Designer: Hitesh Malaviya
Designed in: 2015
Weights: 3

www.indiantypefoundry.com

KunKun is a 'handwritten sans' – each letter looks as if it has been written with a single monolinear stroke, and its letters' terminals are fully rounded-off and almost sausage-shaped. Three weights are available in the family, and each font each contains 406 glyphs. Despite KunKun's informality, visible in its default character-forms, its basic proportions are in keeping with many of ITF's text faces. For instance, its design features a large x-height and ascenders that rise above the uppercase.

KunKun

— a handwritten sans

KunKun is a ‘handwritten sans’ – each letter looks as if it has been written with a single monolinear stroke, and its letters’ terminals are fully rounded-off and almost sausage-shaped. Three weights are available in the family, and each font each contains 406 glyphs. Standard-looking variants of g, y, and z are available via an OpenType feature in a Stylistic Set, and there are two alternate forms for the capital Q, and an optional closed-form & there, too, even though the default looped-descenders on the lowercase g, y, and z strengthen KunKun’s informal appearance. Despite KunKun’s informality, visible in its default character-forms, its basic proportions are in keeping with many of ITF’s text faces. For instance, its design features a large x-height and ascenders that rise above the uppercase letters. Special characters like the &, @, and § also all take typical typographic forms.

LIGHT

Balcony

THE FAMILY CONSISTS OF THREE
INFORMAL WEIGHTS RANGING
FROM LIGHT TO BOLD

Quirky spud boys can jam after zapping twenty-five worthy

REGULAR

Marzip!

Vår sære Zulu fra badeøya spilte jo whist og quickstep i min

BOLD

Vertigo

Bored? Craving a pub quiz fix? Why, come to the Kiss Cafe!

KunKun Light
KunKun Regular
KunKun Bold

BÅRBÉR

“99.9% of Trends and Brands”

TRATTORIA

increasing cross-pollination of concepts

£87.4

tankōbon have become increasingly common

Sūpèrheró

LIFE AND DEATH

¿Way?

Wöw, I'd join!

#23 in level 450

“I'd join you, but I think I'm close to locating a gluino, which would completely validate supersymmetrical theory if we could include it in the bestiary.”

Quick Queen Quinoa

CRIMINALS ARE A SUPERSTITIOUS LOT

LIGHT
55 PT

BARBICAN OUTBURNT

LIGHT
18 PT

The Sind sparrow is social within small groups while feeding, also during its winter dispersal. It now feeds mostly on the seeds and less often on insects on a ground.

LIGHT
95 PT

Falkirk

LIGHT
14 PT

Nests are made in the branches of thorny trees, and are untidy in globular masses constructed from grass or other plant matter.

LIGHT
10 PT

Distinctively, the male has a chestnut stripe running down its head behind the eye, and the female has big darker head than other sparrow species do. Its main vocalisations are soft chirping calls that are extended into longer songs with other sounds interspersed by breeding males. Historically, this species was thought to be very closely related to the house

REGULAR
55 PT

EXTENSIVE CATTALOS

REGULAR
18 PT

The Sind sparrow is social within small groups while feeding, also during its winter dispersal. It now feeds mostly on the seeds and less often on insects on a ground.

REGULAR
95 PT

Søjāsij

REGULAR
14 PT

Nests are made in the branches of thorny trees, and are untidy in globular masses constructed from grass or other plant matter.

REGULAR
10 PT

Distinctively, the male has a chestnut stripe running down its head behind the eye, and the female has big darker head than other sparrow species do. Its main vocalisations are soft chirping calls that are extended into longer songs with other sounds interspersed by breeding males. Historically, this species was thought to be very closely related to the house

BOLD
55 PT

CAZIQUES LAMIGERS

BOLD
18 PT

The Sind sparrow is social within small groups while feeding, also during its winter dispersal. It now feeds mostly on the seeds and less often on insects on a ground.

BOLD
95 PT

Yárely

BOLD
14 PT

Nests are made in the branches of thorny trees, and are untidy in globular masses constructed from grass or other plant matter.

BOLD
10 PT

Distinctively, the male has a chestnut stripe running down its head behind the eye, and the female has big darker head than other sparrow species do. Its main vocalisations are soft chirping calls that are extended into longer songs with other sounds interspersed by breeding males. Historically, this species was thought to be very closely related to the

WIDTH PROGRESSION IN
AVAILABLE WEIGHTS

a

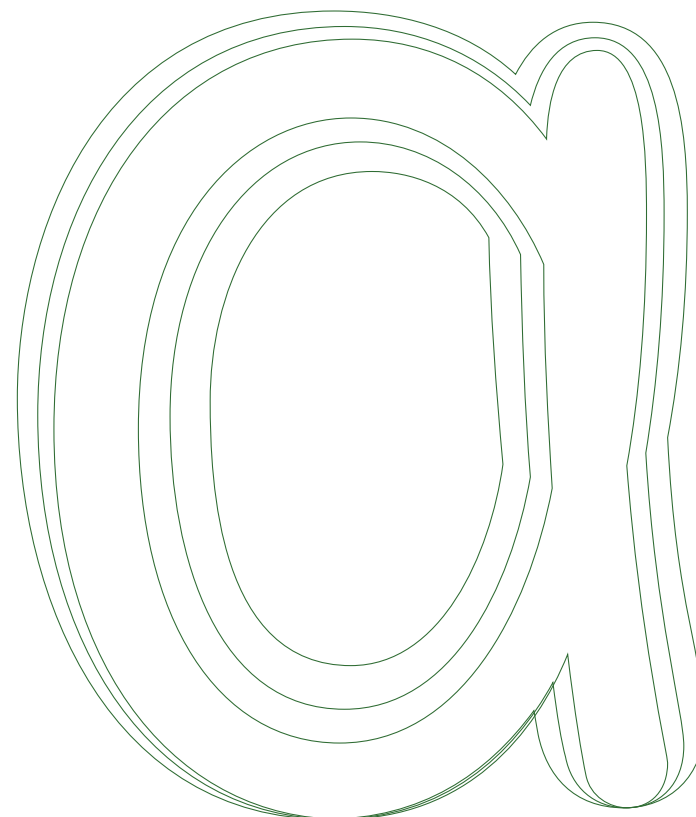
LIGHT

a

REGULAR

a

BOLD



VERTICAL PROPORTIONS

Báldpātēs!

LOWERCASE G, Y, Z AS WELL AS NUMBER 8 EACH HAVE AN ALTERNATE VERSION (STYLISTIC SET 1)
UPPERCASE Q HAS TWO ALTERNATES (STYLISTIC SET 1 & 2)

IQ mygoza IQ mygoza IQ
10267589.43 10267589.43

FIGURES ARE SLIGHTLY LOWER THAN CAPS

MONOLINEAR CONTRAST, WITH OPTICAL CORRECTIONS

ASCENDERS RISE ABOVE THE UPPERCASE LETTERS

VERY LARGE X-HEIGHT

DEFAULT LOOPED DESCENDERS STRENGTHEN INFORMAL APPEARANCE

PUNCTUATION HAS THE SAME SOFT ROUNDED CHARACTER AS OTHER CHARACTERS

ALL LETTERS ARE "WRITTEN" IN ONLY ONE STROKE

LOOP INTERSECTIONS

STROKE ENDINGS AND TERMINALS ARE FULLY ROUNDED

Tralwěg,

EVEN THE SPECIAL CHARACTERS TAKE HANDWRITTEN FORMS

@§&*

VARIOUS CURRENCY SYMBOLS

\$53 ¢25 ¥65
€28.97 £43

LIGATURES ARE AVAILABLE AS AN OPENTYPE FEATURE

ff > ff
fi > fi
fl > fl
ffi > ffi
ffl > ffl

affluently

KUNKUN 8/13 PT

¶ The #development of Roman typeface may be traced back to Greek lapidary letters. Greek lapidary letters were carved ≈6420 A.D. into stone and “one of the first formal uses of Western letterforms”; after that, they evolved into the monumental capitals, which laid the foundation for our Western typographical design, especially serif typefaces. There are 2 styles of Roman typefaces: the old style & the modern. The former is characterized by its similarly-weighted lines, while the 15e⁴ latter is distinguished by its [contrast of light] and heavy lines. Often, these styles are combined. By the 20th century, computers turned type design into a rather simplified #process. This has allowed the number of @typefaces and styles €948.5 to proliferate exponentially, as there now are thousands available. Unfortunately, confusion between ypeface and font* (the various styles of a typeface) occurred ~1984 when Steve Jobs mislabeled typefaces as ‘fonts’ for Apple computers and his error has been perpetuated throughout

LIGHT

REGULAR

BOLD

KUNKUN 23/26 PT

¶ The #development of Roman typeface may be traced back to Greek lapidary letters. Greek lapidary letters were carved ≈6420 A.D. into stone and “one of the first formal uses of Western letterforms”; after that, they evolved into the monumental capitals, which laid the foundation for our Western typographical design, especially serif typefaces. There are 2 styles of Roman typefaces: the old style & the modern. The former is characterized by its similarly-weighted lines, while the 15e⁴ latter is distinguished by its [contrast of light] and heavy lines. Often, these styles are combined. By the 20th century, computers turned type design into a rather simplified #process. This has allowed the number of @typefaces and styles €948.5 to proliferate exponentially, as there now are thousands available. Unfortunately, confusion between ypeface and font* (the various styles of a typeface) occurred ~1984 when Steve Jobs mislabeled typefaces as ‘fonts’ for Apple computers and his error has been perpetuated throughout the computer industry, leading to common misusage by the public of the term ‘font’ when typeface is the proper

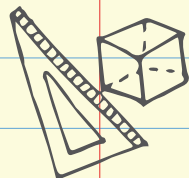
BACK TO SCHOOL



Math:

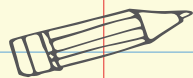
read Chapter 3: Addition
do exercises 2, 5, 7, 18a, 18b, 20

due: Monday, 23rd September



School supplies:

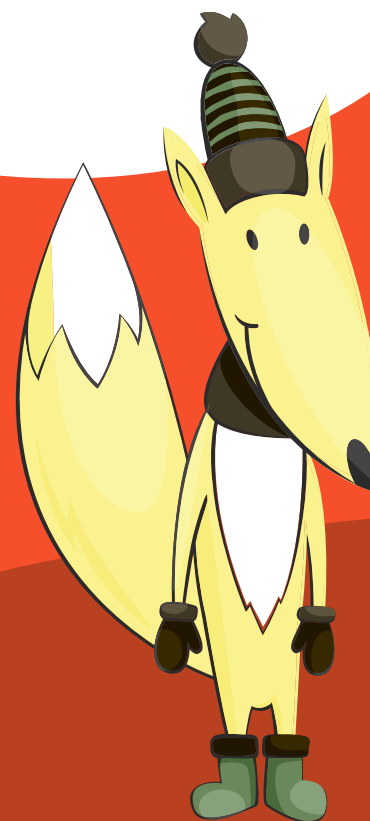
- 3 lined notebooks (A5)
- No. 2 pencils with erasers
- ~~protractor~~ protractor
- compass
- pens and ~~ink~~



Football practice every
Tuesday at 5:30 p.m.



Corpul vulpii nu este mare, fiind asemănător cu al câinelui, dar iese în evidență datorită **cozii lungi și stufoase, care are vârful alb**. Blana este roșcată. Vulpea mănâncă multe mici mamifere: **șoareci de câmp, popândăi, castori, lemingi și veverițe**.



Ce spune
vulpea?

Margaret's morning routine

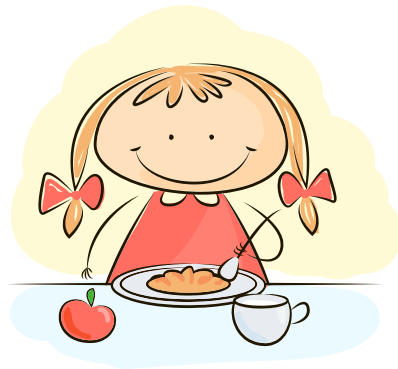


7:30

Margaret **wakes up**. She brushes her teeth and puts her **red dress** on.

7:45

Margaret **wakes up**. She has a croissant, an apple, and a cup of milk for **breakfast**.



8:25

Margaret goes to **school**. Her first **class** is 'Reading' with Ms. Gobber.



Activity 1. What do you have for breakfast? List as many **breakfast foods** as you can think of.

How fast can you count?



KunKun game for kids aged 6+

The cost of printer ink

Printer ink is very expensive. Artist Celeste Watson recently suggested it should be packaged like

Chanel No.5



Switching to Kunkun

Each year, about
1.3 billion
ink cartridges are sold
worldwide, costing
\$30.1 billion

If the entire world
switched to Kunkun
Light from Helvetica,
we would use at least
38 million
less ink cartridges/year



Baby Shower

20.07.2016

Our baby girl
Felicitas Andrea Foster
is on the way!



A ladies' evening full of baby fun, activities,
cupcakes & presents. Find the present
list at babyshowers.com/felicitas-andrea.

You are expected at 17:40 at 254 Donper Road, 25630 Milkwakee.