

LICENSE

NAME: LICENSE

CLASSIFICATION: MONOSPACE

DESIGNER: JEAN-BAPTISTE MORIZOT

DESIGNED IN: 2016

STYLES: 1

WWW.INDIANTYPEFOUNDRY.COM

LICENSE IS A TYPEFACE DESIGNED FOR CAR AND MOTORBIKE LICENSE PLATES. ITS LETTERS - ALL UPPERCASE - ARE MONOSPACED AND INSTANTLY IDENTIFIABLE; HOWEVER, THEY DON'T LOOK SO TECHNICAL THAT THEY'D BE OUT OF PLACE IN OTHER DESIGN APPLICATIONS. FOR INSTANCE, LICENSE IS AN EXCELLENT CHOICE FOR ADDRESS SIGNAGE, TOO. WHILE LICENSE ONLY INCLUDES ONE SET OF LETTERS, IT OFFERS THREE RANGES OF NUMERALS.

LICENSE

INTRO DUCTION

In many countries, including India, there is not a standardised, nationwide system of lettering for use on motor vehicle license plates. Drivers and license plate sellers are left to their own devices, with mixed results. ITF's new License typeface fills a need for good lettering that is both instantly legible and well designed. Car and bike license plates are far from the only area in which License can be used, however. We think License is an excellent choice for signage, too, or really any environment where signs combining letters and numbers need to be created (such as building addresses). License is an all-caps monospaced design, which means that each character in the font shares the same width. License's design is clean-cut and industrial-looking: these are letterforms that we hope will make engineers and machine-manufacturers happy, as well as designers.

ABOUT THE TYPEFACE

001

12345
67890

002

12345
67890

003

12345
67890

For usage cases such as license plates or address signage, the design of a typeface's numerals are of supreme importance. While License only includes one set of letters, the font offers users **three different sets of numerals**. The standard numerals ⁰⁰¹ are the most classic-looking; they have relatively closed apertures and no visible stroke contrast. The '0' has a slash through its counter, and the '1' has a diagonal beak on its top and feet on its bottom. The numerals accessible through Stylistic Set 1 ⁰⁰² are more streamlined in appearance. Their counters are much more open. Due to its top half, this alternate '3' is significantly different from the '8'; the '0' has a diamond shape inside its counter to help differentiate it from a capital 'O', too. The '1' has a beak on its top, but no additional stroke at its base. The main diagonal stroke of the '7' is curved. In both the standard set of numerals and in Stylistic Set 1, the '6' and the '9' each have different forms so that readers can differentiate between them quickly. The numerals accessible through Stylistic Set 2 ⁰⁰³ are more like License's standard numerals, but feature added stroke contrast and a few serifs (such as on the '2', '4', '5', and the '7'). This alternate '0' has a dot inside its counter. The beak on this '1' is flat, and parallel with the base. In Stylistic Set 2, the forms of the '6' and the '9' are related to each other, too.

KØDPÅLÆG

©2016 COMMUNAL INAUGURATION™

DE-362R

{ \$278.893.091 }

UP!

EXACTLY 14'17"

GET YOUR VANITY LICENSE

COUGAR

39 PRUZEN

LOĎ ČEŘÍ KÝLEM TŮŇ

35K

PŘÍŠERNĚ ŽLUŤOUČKÝ KŮŇ ÚPĚL ĎÁBELSKÉ ÓDY

REGULAR
57 PT

APPLICATION-HOUR

REGULAR
21 PT

BEFORE GOING IN TO
APPLY FOR YOUR SPECIAL
PLATE, YOU SHOULD
VISIT THE MVL LICENSE

REGULAR
101 PT

R428K4

REGULAR
16 PT

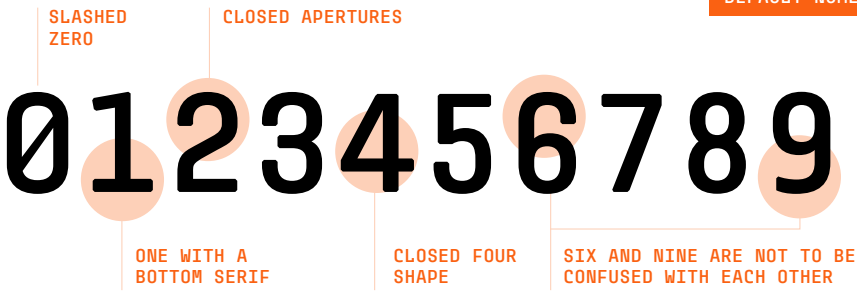
IN KENTUCKY/US, SEVERAL TYPES
OF LICENSE PLATES CAN BE
PERSONALIZED, INCLUDING THE
STANDARD KY LICENSE PLATE AND

REGULAR
11 PT

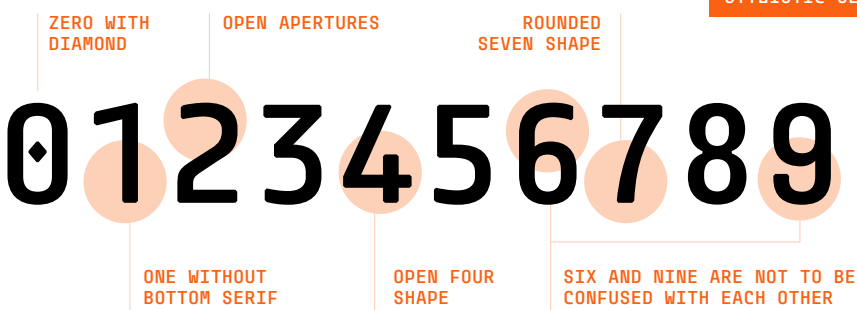
TO CHECK THE AVAILABILITY OF A LICENSE
PLATE NUMBER, CHOOSE YOUR PLATE TYPE FROM
THE KYTC WEBSITE AND FOLLOW THE LINK TO
PERSONALIZATION OPTIONS. YOU'LL PAY A \$25

THE DEFAULT NUMERALS AND STYLISTIC SET 1 ARE OPTIMISED FOR ANTI-FALSIFICATION USAGES. EACH NUMRAL IN TEH SET IS UNIQUELY IDENTIFIABLE AND CANNOT BE CONFUSED WITH ANOTHER.

DEFAULT NUMERALS

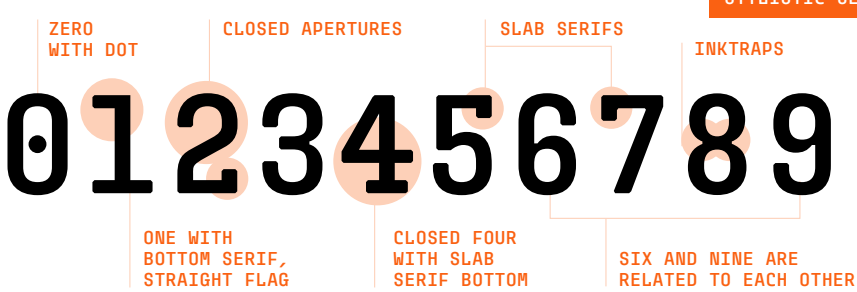


STYLISTIC SET 1



THE NUMERALS IN STYLISTIC SET 2 CAN BE USED FOR GRAPHIC DESIGN APPLICATIONS OR AS TABULAR NUMBERS.

STYLISTIC SET 2



THE LETTERS ARE NOT BUILT MODULARLY, BUT EACH HAVE UNIQUE IDENTIFIERS WHICH HELP THEM NOT BE CONFUSED OR MODIFIED INTO OTHER LETTERS

THE ROUND SHAPES ARE ALSO DESIGNED NOT TO BE CONFUSED WITH EACH OTHER. FOR EXAMPLE, THE C CANNOT BE TURNED INTO AN O OR G

LEFTJI B6983S

CG060Q MVWYAX

ALL CAPS, MONOSPACED DESIGN

SLIGHTLY SQUARISH CURVES WITH STRAIGHT SIDES

WIDE APEXES

THE ZERO IS DESIGNED WITH EITHER SLASH, DIAMOND OR DOT IN ORDER TO STAND OUT FROM FROM THE O

CLOSED APERTURES

BEVELED CORNERS

VERY LOW STROKE CONTRAST

THE G HAS A SPUR FOR BETTER RECOGNIZABILITY

THE LETTERS ARE RATHER NARROW AND COMPACT

ROUND COUNTERSHAPES

RS + GÔM60

THE LETTERFORMS IN LICENSE ARE INSPIRED BY INDUSTRIAL SHAPES AND ARE FULLY MONOSPACED, FROM THE BASIC LETTERS TO THE PUNCTUATION

LICENSE PROVIDES SUPPORT FOR MOST EUROPEAN LANGUAGES WRITTEN WITH THE LATIN SCRIPT AND OFFERS A BASIC MATHEMATICAL SET OF GLYPHS

2ND/FLŒUR^&

[ŦPǻŦ-ÊÛRØPĒǺÑ?*[
[¥30%]+{25*4⁰/₀₀}=√³/₄

A B C D E F G H I J K L M
N O P Q R S T U V W X Y Z

0 1 2 3 4 5 6 7 8 9

0 1 2 3 4 5 6 7 8 9

0 1 2 3 4 5 6 7 8 9

¢ € \$ ¥ £ ₹ ¢ ¤ ¤ ¤ ¤ ¤
 ³ ⁴ ¼ ½ ¾ # % ‰ ″ † ‡ /
 § ¶ + − ± ÷ × = < > ≤ ≥ ≠
 ¬ ° µ π ∂ ∫ ^ ~ ∑ ∏ ∆ ∇ √
 ∞ ≈ e ℓ ◇

[] [] { } _ - - - / / "

" , " < > << >> * . , : ; ...

! ¡ ? ¿ / \ | ¡ @ & . ♦ ©

® ™

À Á Â Ã Ä Å Ā Ă Ą Æ Ç Ć Ĉ
 Ċ Č Ď Đ ð È É Ê Ë Ē Ė Ě Ė Ę
 Ě Ĝ Ğ Ġ Ģ Ĥ Ħ Ì Í Î Ï Ī Ĭ
 Į Į I J Ĵ K Ĺ Ľ Ļ Ľ Ľ Ľ Ľ Ľ
 Ń Ņ Ò Ó Ô Õ Ö Ō Ő Ő Ø Œ Œ Œ
 Ŕ Ŗ Š Š Š Š Š Š Š Š Š Š Š Š
 Ũ Ü Ů Ů Ů Ů Ů Ů Ů Ů Ů Ů Ů Ů
 Ÿ Ÿ Ÿ Ź Ź Ź Ź

LICENSE REGULAR 7/12.5

¶ THE DESIGN OF TYPEFACES HAS DEVELOPED ALONGSIDE THE PROCEEDING DEVELOPMENT OF TYPESETTING SYSTEMS. ALTHOUGH TYPOGRAPHY HAS EVOLVED SIGNIFICANTLY FROM ITS ORIGINS, IT IS A LARGELY \$37 CONSERVATIVE ART THAT TENDS TO CLEAVE CLOSELY TO TRADITION. THIS HAPPENS BECAUSE LEGIBILITY IS 97% PARAMOUNT, AND SO THE TYPEFACES THAT ARE MOST READABLE USUALLY ARE RETAINED. IN ADDITION, THE LONG EVOLUTION OF TYPOGRAPHY IS INEXTRICABLY INTERTWINED WITH LETTERING BY HAND & 124.000 RELATED ARTISTIC FORMS, ESPECIALLY FORMAL_STYLES, WHICH THRIVED FOR CENTURIES PRECEDING @TYPOGRAPHY – AND SO THE EVOLUTION OF TYPOGRAPHY MUST BE DISCUSSED WITH ΣE25 REFERENCE TO THIS RELATIONSHIP [BLACKLETTER, OR GOTHIC]. IN THE PRELIMINARY STAGES OF 854.084 EUROPEAN PRINTING, THE TYPEFACE WAS DESIGNED IN [IMITATION OF #25 THE POPULAR] HAND-LETTERING STYLES OF THE SCRIBES.

LICENSE REGULAR 12/18 PT

¶ THE DESIGN OF #TYPEFACES HAS DEVELOPED ALONGSIDE THE DEVELOPMENT OF TYPESETTING SYSTEMS. ALTHOUGH TYPOGRAPHY HAS EVOLVED SIGNIFICANTLY FROM ITS ORIGINS, IT IS A LARGELY \$37.50 CONSERVATIVE ART THAT TENDS TO CLEAVE CLOSELY TO TRADITION. THIS HAPPENS BECAUSE LEGIBILITY IS 97% PARAMOUNT, AND SO THE TYPEFACES THAT ARE MOST READABLE USUALLY ARE RETAINED. IN ADDITION, THE LONG & COMPLICATED PROCESS OF EVOLUTION OF TYPOGRAPHY IS INEXTRICABLY INTERTWINED WITH LETTERING BY HAND & 124.000 RELATED ARTISTIC FORMS, ESPECIALLY FORMAL_STYLES, WHICH THRIVED FOR CENTURIES PRECEDING @TYPOGRAPHY – AND SO THE EVOLUTION OF TYPOGRAPHY MUST BE DISCUSSED WITH ΣE25 REFERENCE TO THIS FRUITFUL RELATIONSHIP. IN THE NASCENT STAGES OF EUROPEAN PRINTING,

LICENSE REGULAR 21/23 PT

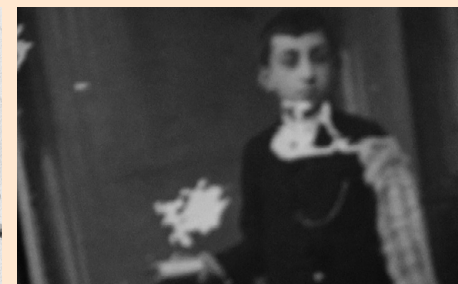
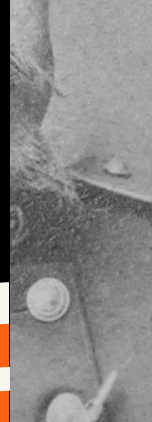
¶ THE DESIGN OF #TYPEFACES HAS DEVELOPED SLOWLY ALONGSIDE THE DEVELOPMENT OF TYPESETTING SYSTEMS. ALTHOUGH TYPOGRAPHY HAS EVOLVED SIGNIFICANTLY FROM ITS ORIGINS, IT IS A LARGELY CONSERVATIVE ART THAT “TENDS” TO CLEAVE CLOSELY TO TRADITION. THIS HAPPENS BECAUSE LEGIBILITY IS 97% PARAMOUNT, AND SO THE TYPEFACES THAT ARE MOST READABLE USUALLY ARE RETAINED. IN ADDITION, THE LONG [EVOLUTION] OF TYPOGRAPHY IS SO \$37.50 INEXTRICABLY INTERTWINED WITH LETTERING BY HAND & 1.724.000 RELATED ARTISTIC



WWW.VANITY-PLATES.COM



SILICON VALLEY CRIMES



ABOUT NATIVES



HISTORY MONTH

FREE PARKING

MON-FRI 07:00-16:00

SAT-SUN 11:00-16:00

LEVEL

5K

← EXIT

FROM: INFO@CARPLATES.GOV

TO: MARGARET.SUPER@ME.COM

**GETTING YOUR NEW LICENSE
PLATE IS AS EASY AS 1,2,3!**

STEP 1

**APPLY FOR AN APPOINTMENT
CARPLATE.GOV WITH YOUR NAME
ADDRESS & TELEPHONE NUMBER**

STEP 2

**COMPLETE FORM 254.4B GIVEN TO YOU
AT THE APPOINTMENT, THEN
WITH YOUR SECRET CODE.**

STEP 3

**CHOOSE A UNIQUE CAR PLATE
OTHERWISE A RANDOM ONE WILL BE
ASSIGNED TO YOU.**

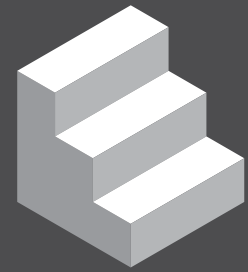
**YOUR CAR PLATE WILL BE DELIVERED TO YOU
AT THE ADDRESS YOU ENTERED**



APPLY NOW

ST
95
RE8
IGN

STAIRWAY³⁵
STUDIOS



SINCE 1965

LOGO
006

LOGO
005

BOARDING TIME14:15

DATE18.SEP.2016

PASSENGERMARIANO-SEAN,
CAPONE

FROMYVR

TOAMS

FLIGHT NO.K510

GATEB36

SEATA4

PLEASE BE AT THE BOARDING GATE AT 13:45

BOARDING PASS

PASSENGERMARIANO-SEAN,
CAPONE

GATEB36

SEATA4

YVR >> AMS

FLIGHT NO. K510

LUGGAGE CHECK

PASSENGERMARIANO-SEAN,
CAPONE

GATEB36

SEATA4

YVR >> AMS

FLIGHT NO. K510