

# QUANTUM Rounded

**Name:** Quantum Rounded

**Classification:** Display Sans Serif

**Designer:** Hitesh Malaviya (Rocky)

**Designed in:** 2016

**Styles:** 5

[www.indiantypefoundry.com](http://www.indiantypefoundry.com)

A very friendly-looking sans, Quantum Rounded is part of Hitesh Malaviya's Quantam Multi-Script series. Quantum Rounded's five styles are feature letters so wide that they are almost panoramic, and thanks to its stroke-terminals, Quantum Rounded is a typeface for the social media age. Despite having the bones of an extended sans, the letterforms in Quantum Round aren't too technical in their appearance. Don't overlook the tails on 'K,' 'Q,' 'R,' and 'k'!

# Extended display sans serif family

## — Quantum Rounded

A very friendly-looking sans, Quantum Rounded is part of Hitesh Malaviya's Quantam Multi-Script series. Quantum Rounded's five styles are feature letters so wide that they are almost panoramic, and thanks to its stroke-terminals, Quantum Rounded is a typeface for the social media age. Despite having the bones of an extended sans, the letterforms in Quantum Round aren't too technical in their appearance. Don't overlook the tails on 'K,' 'Q,' 'R,' and 'k'!

LIGHT

Bûrġlars

Robot can refer to both physical robots and

REGULAR

Oũtbačk

Especially a “behavior” which mimics human

MEDIUM

Møckérs

There are also accounts of flying automata!

SEMIBOLD

Pħåraòn

Remotely operated vehicles were exposed\*

BOLD

Sčrolling

At issue is whether the robots are exploited

THIS FAMILY CONSISTS  
OF FIVE WEIGHTS RANGING  
FROM LIGHT TO BOLD

Quantum Rounded Light

Quantum Rounded Regular

Quantum Rounded Medium

Quantum Rounded Semibold

Quantum Rounded Bold

Bingos

{ £4010.389.763/52 }

@FR9

Looks in the 1950s

Yěs?

Pass-Straße

LOVE

AMPLITUDE

KiløS

ABSOLUTELY SPECIAL

STICKY

»Telecommunication«

\$539

CULTURAL EVOLUTION\*

Friend<sup>3</sup>

LIGHT  
39 PT

EARNED  
RESPECT

LIGHT  
20 PT

There are several  
words that are  
often associated  
with the word

LIGHT  
67 PT

Bäyŭt

LIGHT  
16 PT

Combining both their  
physical origins and  
the cultural overlay of

LIGHT  
10 PT

The Chinese garden is a landscape  
garden style which has evolved  
over three thousand years. It does  
include both the vast gardens of  
the Chinese emperors & members

REGULAR  
39 PT

EARNED  
RESPECT

REGULAR  
20 PT

There are several  
words that are  
often associated  
with the word

REGULAR  
67 PT

Næijsš

REGULAR  
16 PT

Combining both their  
physical origins and  
the cultural overlay of

REGULAR  
10 PT

The Chinese garden is a landscape  
garden style which has evolved  
over three thousand years. It does  
include both the vast gardens of  
the Chinese emperors & members

MEDIUM  
39 PT

# EARNED RESPECT

MEDIUM  
20 PT

There are several words that are often associated with the word

MEDIUM  
67 PT

# Eårth

MEDIUM  
16 PT

Combining both their physical origins and the cultural overlay of

MEDIUM  
10 PT

The Chinese garden is a landscape garden style which has evolved over three thousand years. It does include both the vast gardens of the Chinese emperors & members

SEMIBOLD  
39 PT

# EARNED RESPECT

SEMIBOLD  
20 PT

There are several words that are often associated with the word

SEMIBOLD  
67 PT

# Glădş

SEMIBOLD  
16 PT

Combining both their physical origins and the cultural overlay of

SEMIBOLD  
10 PT

The Chinese garden is a landscape garden style which has evolved over three thousand years. It does include both the vast gardens of the Chinese emperors & members

BOLD  
39 PT

# EARNED RESPECT

BOLD  
20 PT

There are several  
words that are  
often associated  
with the word

BOLD  
67 PT

# Riǎaij

BOLD  
16 PT

Combining both their  
physical origins and  
the cultural overlay of

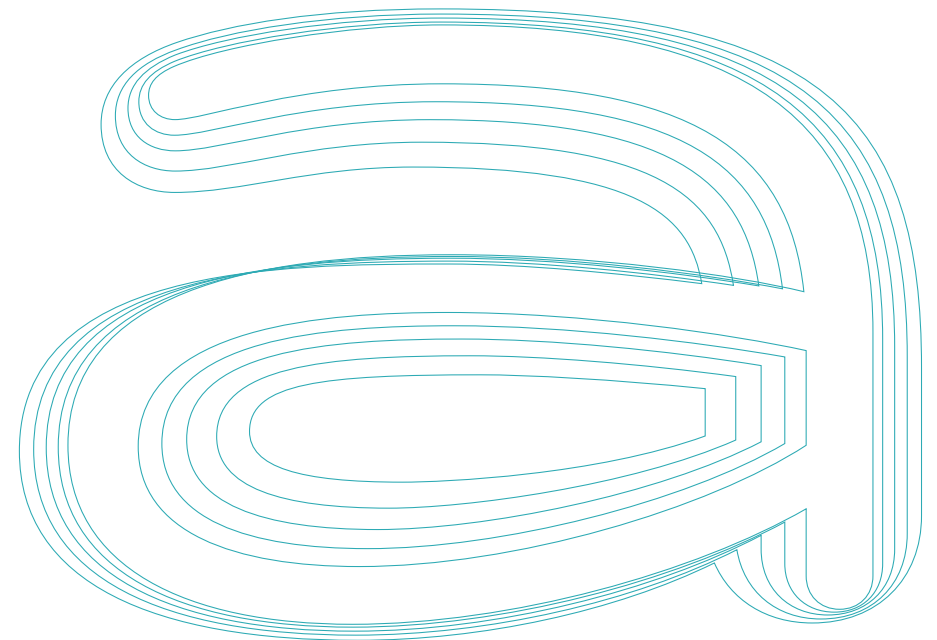
BOLD  
10 PT

The Chinese garden is a landscape  
garden style which has evolved  
over three thousand years. It does  
include both the vast gardens of  
the Chinese emperors & members

STYLES PROGRESSION

a a a a a

LIGHT REGULAR MEDIUM SEMIBOLD BOLD

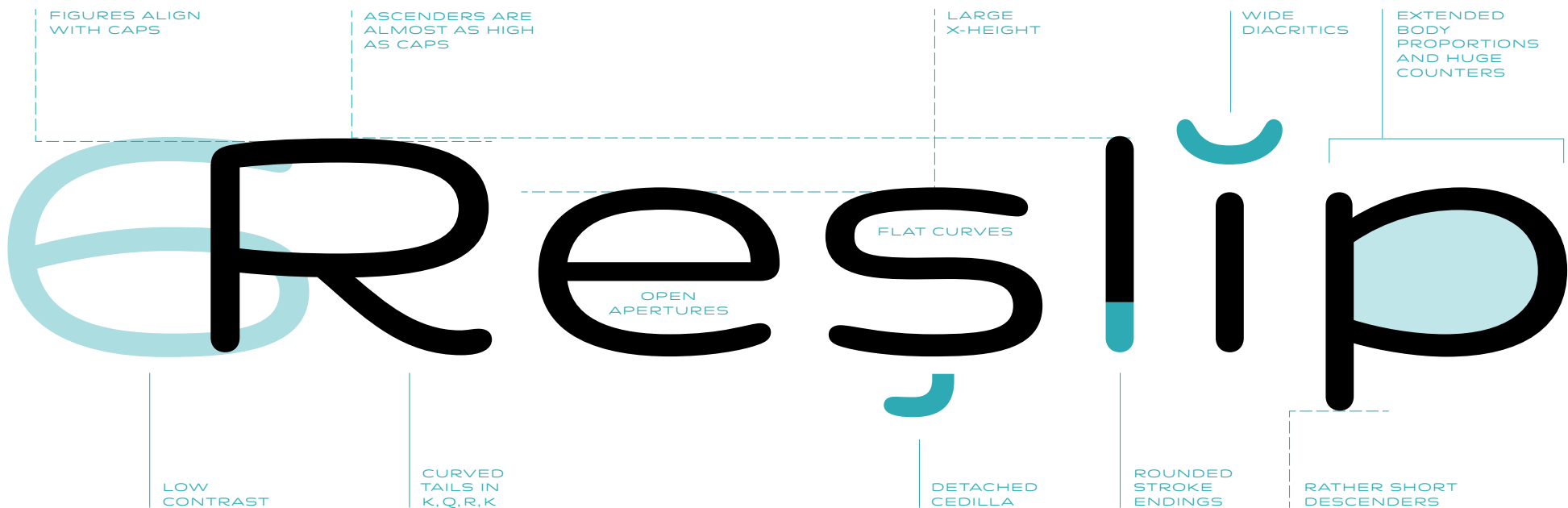


VERTICAL PROPORTIONS OF QUANTUM

Typography

SUPPORT FOR MOST EUROPEAN LANGUAGES WRITTEN WITH THE LATIN SCRIPT

Blåbærsyltetøy & Manâjo  
Tükörfúrógép Pättýždňové



NUMERALS BALANCED WITH CURRENCY SYMBOLS, UPPERCASE, AND LOWERCASE

\$2 – ¢3 – £4 – ¥1 – €8  
Bn5 Gi6 Rs5 Sc9

SHARP CROTCHES CONTRAST WITH ROUNDED VERTEXES





LOWERCASE

a b c d e f g h i j k l m n o p  
q r s t u v w x y z

## UPPERCASE

A B C D E F G H I J K L M  
N O P Q R S T U V W X Y Z

## LINING FIGURES

0 1 2 3 4 5 6 7 8 9    fi fl

## LIGATURES

 $f_i \quad f_l$ 

## CURRENCY AND MISCELLANEOUS SYMBOLS

€ \$ ¥ £ ¤ ¢ ° ¹ º » ¼ ½  
 ¾ # % ‰ ' " † ‡ ⁄ § ¶ + − ± ÷  
 × = < > ≤ ≥ ≠ ¬ ° μ π ∂ ∫ ^ ~ Σ  
 Π √ ∞ ≈ Δ Ω ρ ♦

## STANDARD PUNCTUATION

( ) [ ] { } \_ - - - ' ' " " , , < > « »  
\* . , : ; ... ! i ? ¿ / \ | | @ & • ©  
® ™

## LOWERCASE FOREIGN CHARACTERS

[illegible]

## UPPERCASE FOREIGN CHARACTERS

À Á Â Ã Ä Å Æ Ç È É Ê Ë  
 Ì Í Î Ï Ñ Ò Ó Ô Õ Ö Ø Ù Ú  
 Û Ü Ý Þ ß à á â ã  
 ä å æ ç è é ê ë ì  
 í î ï ð ñ ò ó ô õ ö  
 ø œ ù ú û ü ý þ ÿ

QUANTUM REGULAR  
6/13 PT

¶ The #development of Roman typeface is traced back to Greek lapidary letters. Greek lapidary letters were carved ≈6420 A.D. into stone and “one of the first formal uses of Western letterforms”; after that, they evolved into the monumental capitals, which laid the foundation for Western design, especially serif typefaces. There are 2 styles of Roman typefaces that we can classify: the old style & the modern. The former is characterized by its similarly-weighted lines, while the Σ15e<sup>a</sup> latter is distinguished by its [contrast of light] and heavy lines. Often, these styles are combined. By 20th cent., computers turned #type\_design into a rather simplified

LIGHT

MEDIUM

SEMIBOLD

BOLD

QUANTUM REGULAR 21/26 PT

¶ The #development of the specific Roman typeface is traced back to Greek lapidary letters. Greek lapidary letters were carved ≈6420 A.D. into stone and “one of the first formal uses of Western letterforms”; after that, they evolved into the monumental capitals, which laid the foundation for Western typographical design, especially serif typefaces. There are 2 styles of Roman typefaces that we **can classify: the old style & the modern.** The former is characterized by its similarly-weighted lines, while the latter is distinguished by its [contrast of light] and heavy lines. Often, these **styles are combined. By the 20th century, computers turned #type\_design into a rather simplified process.** This has al

12.  
-05.

La  
-Stranda.

2599HP DEN HAAG

Ultimate

# SURF GUIDE

— DE PILAREN  
[15minutenHAMLET]  
STOOP & CO

Beleef het beroemdste stuk van Shakespeare in een kwartier! De grote vragen des levens worden speciaal voor u terug-gebracht tot caféformaat.

concept: Anne Stoop  
spel: Ellik Bargai, Maaïke Mathot, Anne Stoop  
Muziek: Hans Jansen

3.

SPRING/  
SUMMER  
EDITION

Surfing is a surface water sport in which the wave rider, referred to as a surfer, rides on the forward or deep face of a moving wave, which is usually carrying the surfer towards the shore. Waves suitable for surfing are primarily found in the ocean, but can also be found in lakes or in rivers in the form of a standing wave or tidal bore. However, surfers can also utilize artificial waves such as those from boat wakes and the waves created in artificial wave pools.

1.

Another prominent form of surfing is body boarding, when a surfer rides a wave on a bodyboard, either lying on their belly, drop knee, or sometimes even standing up on a body board.

TIP!

WAVE!!!  
INTENSITY

	FAST	MEDIUM	SLOW
SQUARE	The Cobra	Teahupoo	Shark Island
ROUND	Speedies, Gnaraloo	Banzai Pipeline	—
ALMOND	Lagundri Bay, Superbank	Jeffreys Bay, Bells Beach	Angourie Point

\*\_[The availability of free model data several surf websites]

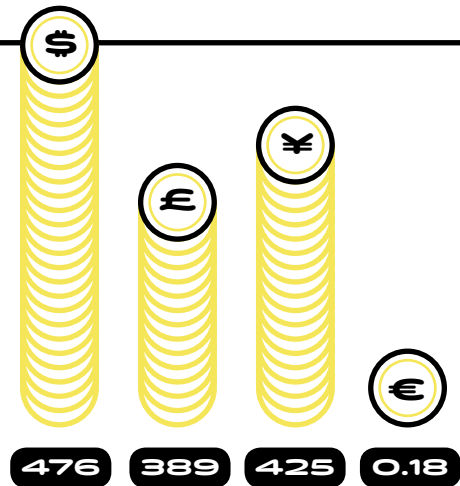
\*\*\_[Artificial surfing reefs can be built with durable sandbags or concrete]

# my — · travel planner

logged in as  
Martin

## Recent locations

EXPLORATION LEVEL

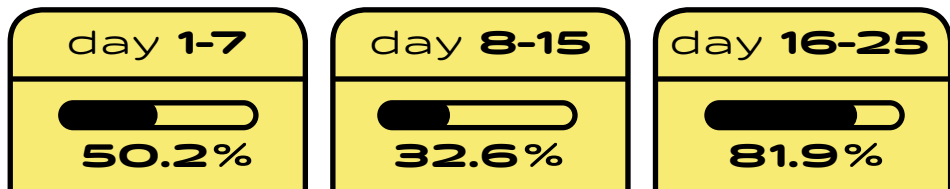


## Financial plans

Given a list of cities and the distances between each pair of cities, what is the shortest possible route that visits each city exactly once and returns to the origin city? It is an NP-hard problem in combinatorial optimization, important in operations research and theoretical computer science.

## Exploration efficiency

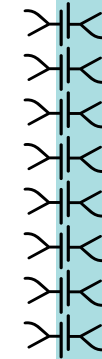
MEASURED WITHIN A DAY



## ART NOW

8th May

—  
Rouge  
Theatre



#01\_Subtle  
symmetries  
in details

—  
Katerina  
Krās





THE BEACH CLUB

# NORTHERN

Broken Casette Tape & The

# Indie

Jazz & F



SO

4

WAD

NATASHA

BEETROOT BOYS

CHECK OUR CURRENT AGENDA ONLY

Reserve the tickets & stay tuned

#00000092

MODERN FAIRY TALES

# RED RIDE HOOD

£25