

QUANTUM

Name: Quantum

Classification: Display Sans Serif

Designer: Hitesh Malaviya (Rocky)

Designed in: 2015

Styles: 5

A very friendly-looking sans, Quantum Latin is Hitesh Malaviya's first published typeface for the Latin-script. Its five styles are very, very wide, but the letterforms do not look too technical. Stroke endings are vertical, like in a humanist sans. Don't overlook the tails on 'K,' 'Q,' 'R,' and 'k!'

Extended display sans serif family

— Quantum

A very friendly-looking sans, Quantum Latin is Hitesh Malaviya's first published typeface for the Latin-script. Its five styles are very, very wide, but the letterforms do not look too technical. Stroke endings are vertical, like in a humanist sans. Don't overlook the tails on 'K,' 'Q,' 'R,' and 'k!'

LIGHT

Mäçħĩņę

Robot can refer to both physical robots and

THIS FAMILY CONSISTS
OF FIVE WEIGHTS RANGING
FROM LIGHT TO BOLD

REGULAR

Prøğrãm

Especially a “behavior” which mimics human

MEDIUM

Swayêrs

There are also accounts of flying automata!

SEMIBOLD

Ťenfőłďś

Remotely operated vehicles were exposed*

BOLD

Baüłkińg

At issue is whether the robots are exploited

Quantum Light

Quantum Regular

Quantum Medium

Quantum Semibold

Quantum Bold

LONGITUDES

RŮlě

Modular robots are a new breed

ŜPAÇEÐ

»Telecommunication«

£239

CULTURAL EVOLUTION*

Kiňetiĉ

%US-5

– \$2010.889.723/57 –

Mango

Books in the 1980s

Qūè?

{Fußgänger}

Élăştiĉ

LIGHT
39 PTBEAVER
EQUITIESLIGHT
20 PT

Depending on its
size, a company
might be required
to hire an auditor

LIGHT
67 PT

Eäÿŭ†

LIGHT
16 PT

The early development
of accounting dates
back to Mesopotamia

LIGHT
10 PT

Late in his reign, Regibald XIV also
became an early proponent of
Baroque, which was to continue
for a considerable time with so
many impressive buildings both in

REGULAR
39 PTBEAVER
EQUITIESREGULAR
20 PT

Depending on its
size, a company
might be required
to hire an auditor

REGULAR
67 PT

Lőťijš

REGULAR
16 PT

The early development
of accounting dates
back to Mesopotamia

REGULAR
10 PT

Late in his reign, Regibald XIV also
became an early proponent of
Baroque, which was to continue
for a considerable time with so
many impressive buildings both in

MEDIUM
39 PT

BEAVER EQUITIES

MEDIUM
20 PT

Depending on its
size, a company
might be required
to hire an auditor

MEDIUM
67 PT

Ūbiåß

MEDIUM
16 PT

The early development
of accounting dates
back to Mesopotamia

MEDIUM
10 PT

Late in his reign, Regibald XIV also
became an early proponent of
Baroque, which was to continue
for a considerable time with so
many impressive buildings both in

SEMIBOLD
39 PT

BEAVER EQUITIES

SEMIBOLD
20 PT

Depending on its
size, a company
might be required
to hire an auditor

SEMIBOLD
67 PT

Ĝïbøč

SEMIBOLD
16 PT

The early development
of accounting dates
back to Mesopotamia

SEMIBOLD
10 PT

Late in his reign, Regibald XIV also
became an early proponent of
Baroque, which was to continue
for a considerable time with so
many impressive buildings both in

BOLD
39 PT

BEAVER EQUITIES

BOLD
20 PT

Depending on its
size, a company
might be required
to hire an auditor

BOLD
67 PT

Riđaij

BOLD
16 PT

The early development
of accounting dates
back to Mesopotamia

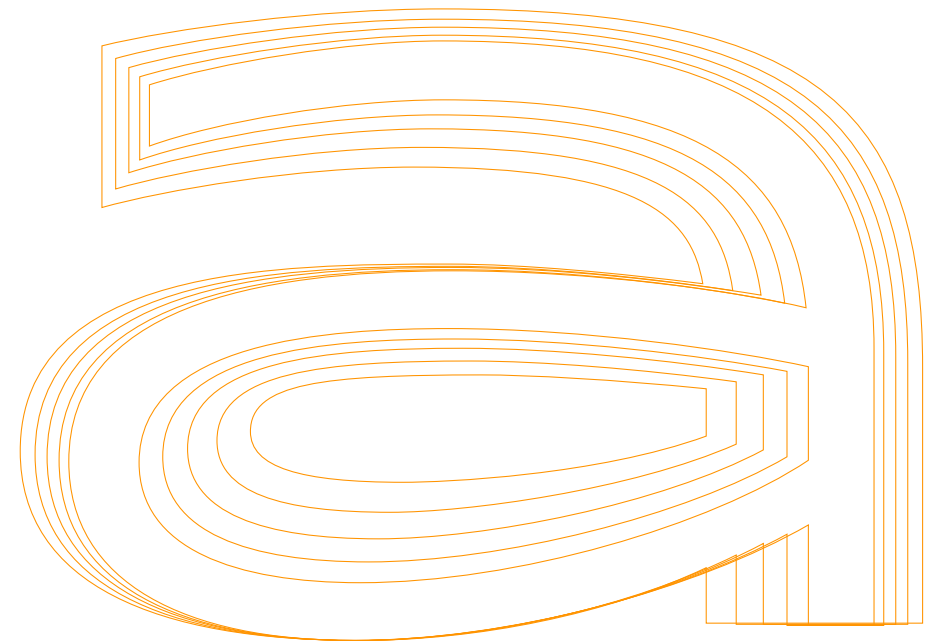
BOLD
10 PT

Late in his reign, Regibald XIV also
became an early proponent of
Baroque, which was to continue
for a considerable time with so
many impressive buildings both in

STYLES PROGRESSION

a — a — a — a — a

LIGHT REGULAR MEDIUM SEMIBOLD BOLD



VERTICAL PROPORTIONS OF QUANTUM

Typography

SUPPORT FOR MOST EUROPEAN LANGUAGES WRITTEN WITH THE LATIN SCRIPT

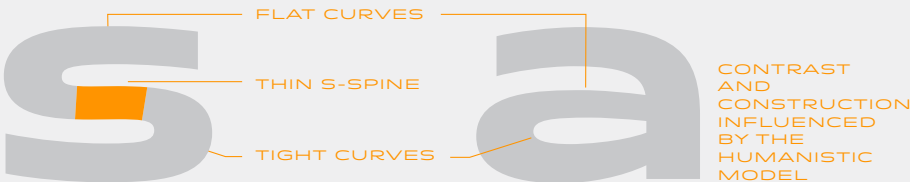
Blåbærsyltetøy & Manôaño
Tükörfúrógép Pättýždňové



NUMERALS BALANCED WITH CURRENCY SYMBOLS, UPPERCASE AND LOWERCASE

\$2 – ¢3 – £4 – ¥1 – €8
Bn5 Gi6 Rs5 Sc9

CHARACTERISTICS OF CURVES AND CONTRAST



LOWERCASE

a b c d e f g h i j k l m n o p
q r s t u v w x y z

UPPERCASE

A B C D E F G H I J K L M
N O P Q R S T U V W X Y Z

LINING FIGURES

0 1 2 3 4 5 6 7 8 9

LIGTURES

fi fl

CURRENCY AND MISCELLANEOUS SYMBOLS

¢ € \$ ¥ £ ₣ ⱥ ⱦ Ⱨ ⱨ Ⱪ ⱪ Ⱬ ⱬ Ɑ Ɱ Ɐ Ɒ ⱱ Ⱳ ⱳ ⱴ Ⱶ
 ¾ # % ‰ ‰ ‰ ‰ ‰ ‰ ‰ ‰ ‰ ‰ ‰ ‰ ‰ ‰ ‰ ‰ ‰ ‰ ‰
 ÷ × = < > ≤ ≥ ≠ ¬ ° μ π ∂ ∫ ^ ~
 Σ Π √ ∞ ≈ Δ Ω ℓ ◇

STANDARD PUNCTUATION

() [] { } _ - - - ' ' " " , , < > « »
* . , : ; ... ! i ? ¿ / \ | | @ & • ©
® ™

LOWERCASE FOREIGN CHARACTERS

à á â ã ä å ā ă ą æ ç ć ċ
č đ ď ð è é ê ë ē ě ě ĝ
ğ ğ ħ ĩ î ī ï j i ij ĵ ķ ł
ł l' ł Ń ņ ŋ ñ ò ó ô õ ö ő
ő ø œ ř ʀ ř ś š ş ș ß ț ț
ț ù ú û ü ŭ ū ŭ ŭ ŭ ŭ ŭ
ŵ ŷ ŷ ŷ ŷ ŷ ŷ ŷ ŷ ŷ ŷ

UPPERCASE FOREIGN CHARACTERS

À Á Â Ã Ä Å Æ Ç È É Ê Ë
 Ì Í Î Ï Ñ Ò Ó Ô Õ Ö Ø Ù Ú
 Û Ü Ý Þ ß à á â ã
 ä å æ ç è é ê ë ì
 í î ï ð ñ ò ó ô õ ö
 ø ù ú û ü ý þ ÿ

QUANTUM REGULAR
6/13 PT

¶ The #development of Roman typeface is traced back to Greek lapidary letters. Greek lapidary letters were carved ≈6420 A.D. into stone and “one of the first formal uses of Western letterforms”; after that, they evolved into the monumental capitals, which laid the foundation for Western design, especially serif typefaces. There are 2 styles of Roman typefaces that we can classify: the old style & the modern. The former is characterized by its similarly-weighted lines, while the Σ15e^a latter is distinguished by its [contrast of light] and heavy lines. Often, these styles are combined. By 20th cent., computers turned #type_design into a rather simplified

LIGHT

MEDIUM

SEMIBOLD

BOLD

QUANTUM REGULAR 21/26 PT

¶ The #development of the specific Roman typeface is traced back to Greek lapidary letters. Greek lapidary letters were carved ≈6420 A.D. into stone and “one of the first formal uses of Western letterforms”; after that, they evolved into the monumental capitals, which laid the foundation for Western typographical design, especially serif typefaces. There are 2 styles of Roman typefaces that we **can classify: the old style & the modern.** The former is characterized by its similarly-weighted lines, while the latter is distinguished by its [contrast of light] and heavy lines. Often, these **styles are combined. By the 20th century, computers turned** #type_design into a rather simplified process. This has al

01

02

DEFRAGMENTED HORIZONS

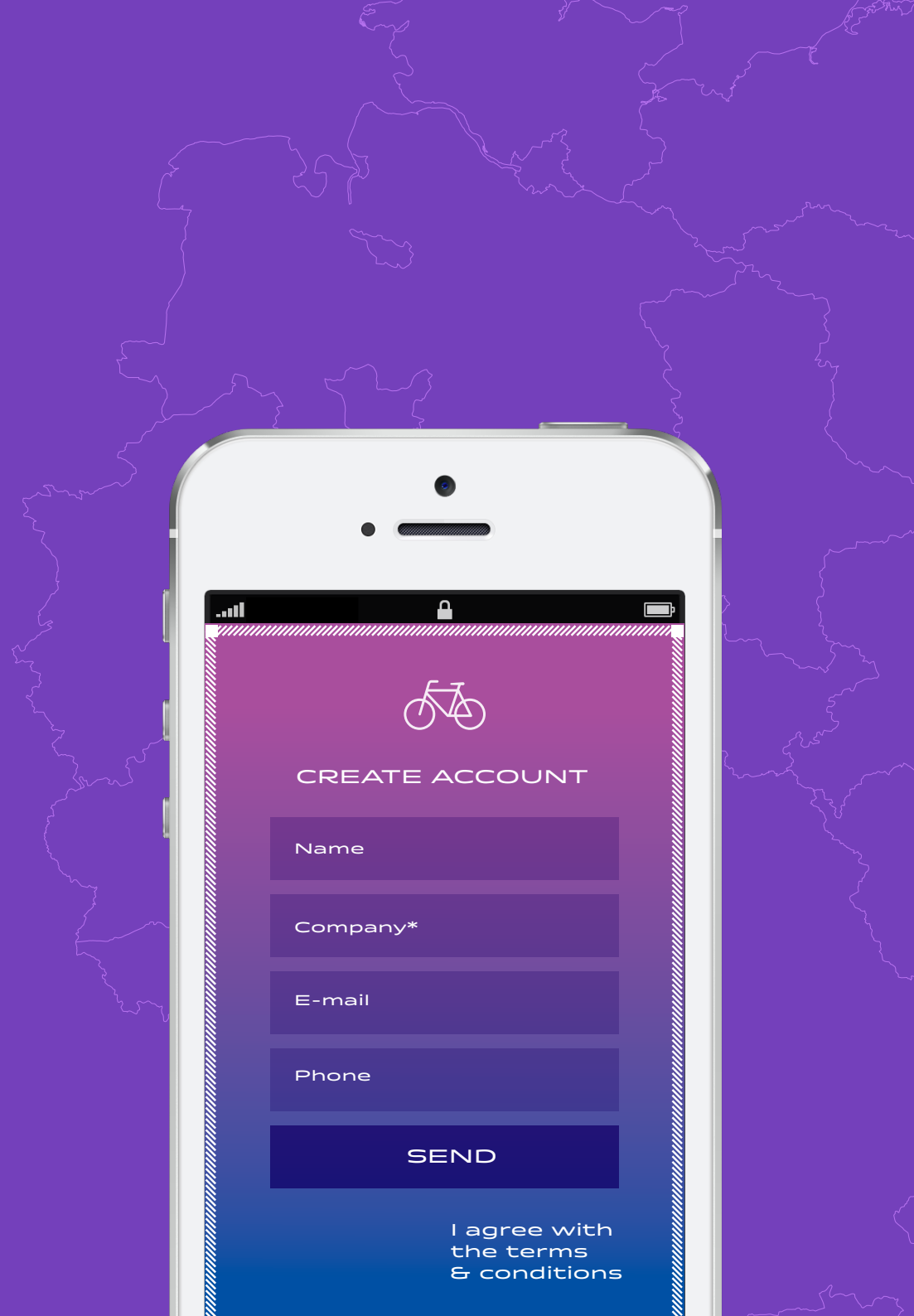
03

DEFRAGMENTED
HORIZONS

OPEN AIR GALLERY
EAST COAST
ENTRANCE—09

04

05



CREATE ACCOUNT

Name

Company*

E-mail

Phone

SEND

I agree with
the terms
& conditions



09:00 Meeting in Conference Room 5

09:30 Coffee break

10:00 Prepare for meeting

10:30 Call Paul

11:00 Call Mary from D&G

11:30 Research Case 235

12:00

12:30 Lunch Break

13:00 Sign Contract RR4

13:30 Board Meeting in Conference Room 5

14:00

14:30 Coffee Break

15:00 Conference Call with Italy

15:00

16:00 Coffee Break

16:30



STARDUST IMAGINING
PRESENT
SPAC — IMPRESSIONS
— ON LIGHT

PREMIÈRE
15.09.

SPACE

¶ Technological revolution is (in general meaning) a relatively not long period in history when one technology (or better a set of technologies) is replaced by another technology (or by the set of technologies). As Nick Bostrom wrote: "We might define a technological revolution as a dramatic change brought about relatively quickly by the introduction of some new technology." It is an era of an accelerated technological progress characterized not only by new innovations but also their application and diffusion.

¶ A difference between technological revolution and technological change is not clearly defined. The technological change we could see as an introduction of an individual (single) new technology, while the technological revolution as a period in which more new technologies are adopted at the almost same time. These new technologies or technological changes are usually interconnected - as 3rd Kranzberg's law of technology says: "Technology comes in packages, big and small.

**WHAT DISTINGUISHES
A TECHNOLOGICAL
REVOLUTION FROM A
RANDOM COLLECTION
OF TECHNOLOGY
SYSTEMS?**



TECH

It can play a role of a trigger of a chain of various and unpredictable changes.

Technological revolution so rewrites the material conditions of human existence and also reshape culture, society and even human nature.

AMSTERDAM

DREAMY RENTALS FOR LESS

Give us a call

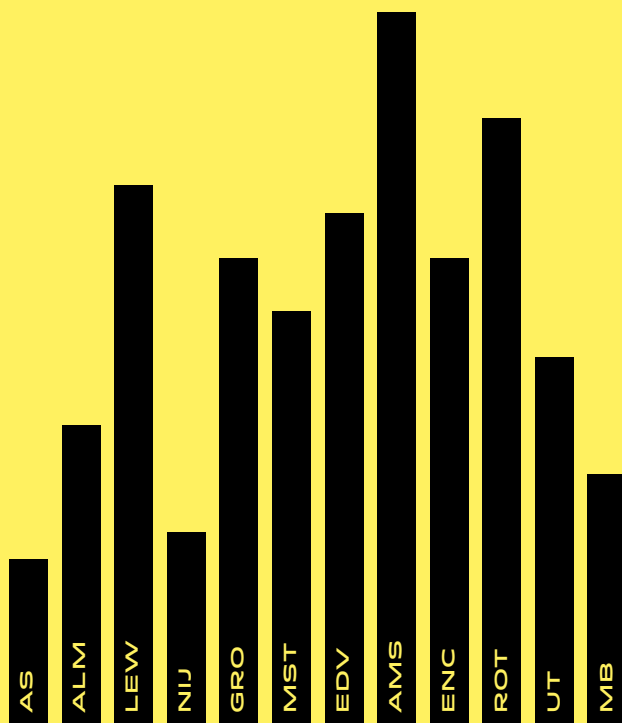
555-864-DREAMY

or visit us

Dumbestraat 75

1036BR

Amsterdam



450	HOUSES FOR SALE
854	APPARTMENTS FOR RENT
53	STUDENT HOUSING
8	NEW PROJECTS
100%	HAPPY CUSTOMERS

Numbers updated April | © 2016 DREAMY RENTALSTM

01

02

DEFRAGMENTED HORIZONS

03

DEFRAGMENTED
HORIZONS

OPEN AIR GALLERY
EAST COAST

04

05

ENTRANCE €9.25
09:00 P.M. — 04:00 A.M.